

WELCOME




CITY OF WHITEFISH

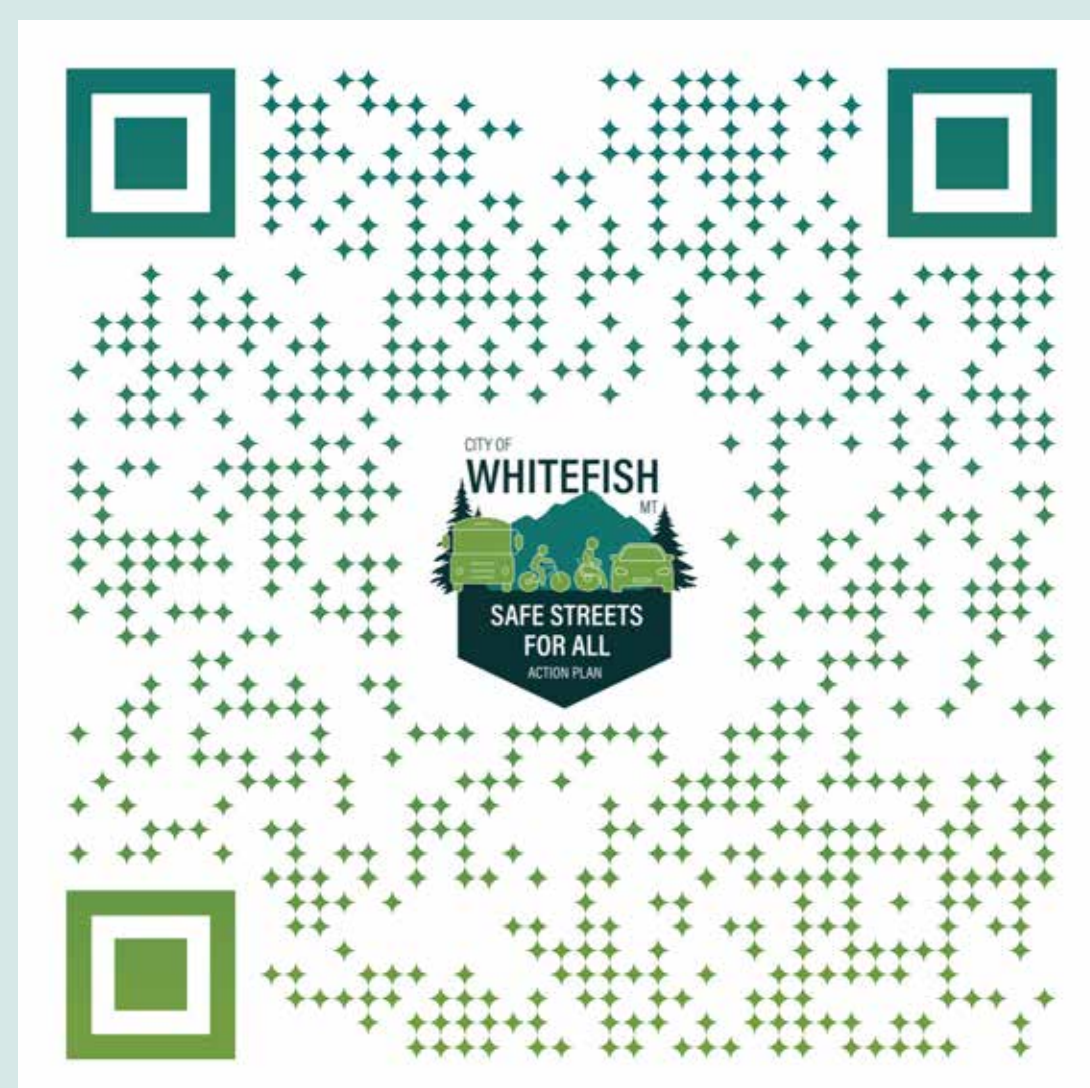
SAFE STREETS FOR ALL

ACTION PLAN



MEETING PURPOSE

-  **Learn** about selected safety focus areas
-  **Review** proposed improvement strategies and projects
-  **Share** your feedback!



For more information
about the Action Plan

**SCAN
ME!** 

or visit

WhitefishSafeStreets.com

THANK YOU

to the Whitefish community for sharing your thoughts about transportation safety!

We received numerous comments through the online commenting map, public meetings, stakeholder meetings, and written comments. Some of the most common themes are summarized below.



Vehicles are unaware of **pedestrians** when turning corners **at intersections** ”



Numerous locations are unsafe for pedestrians to cross. Additional **marked crosswalks with striping, signage, and lighting** are needed. ”



Additional **turn lanes** and modified **intersection control** are needed at high-volume intersections ”



High traffic **speeds** are a safety issue. Consider reducing posted speeds or installing **traffic calming** measures to slow vehicles. ”



Inattentive driving is a problem, especially during the school year. ”



E-bike usage on sidewalks needs to be regulated. ”



Signal timing adjustments are needed to ensure safe pedestrian crossings. ”



Crosswalk and bike lane **striping** is worn due to plowing and traffic. Restriping needs to occur at least annually. ”



Protected facilities are desired, including separated bike lanes and sidewalks with landscaped buffers. ”



Visibility issues need to be addressed at locations with blind curves, vegetation, parked cars, and poor sight lines. ”



Some **intersections** are **confusing** for drivers. Need to improve lane configurations, pavement markings, and signage. ”



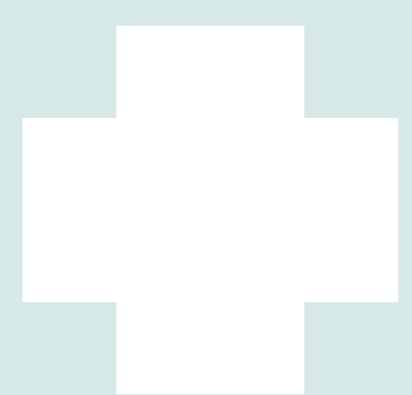
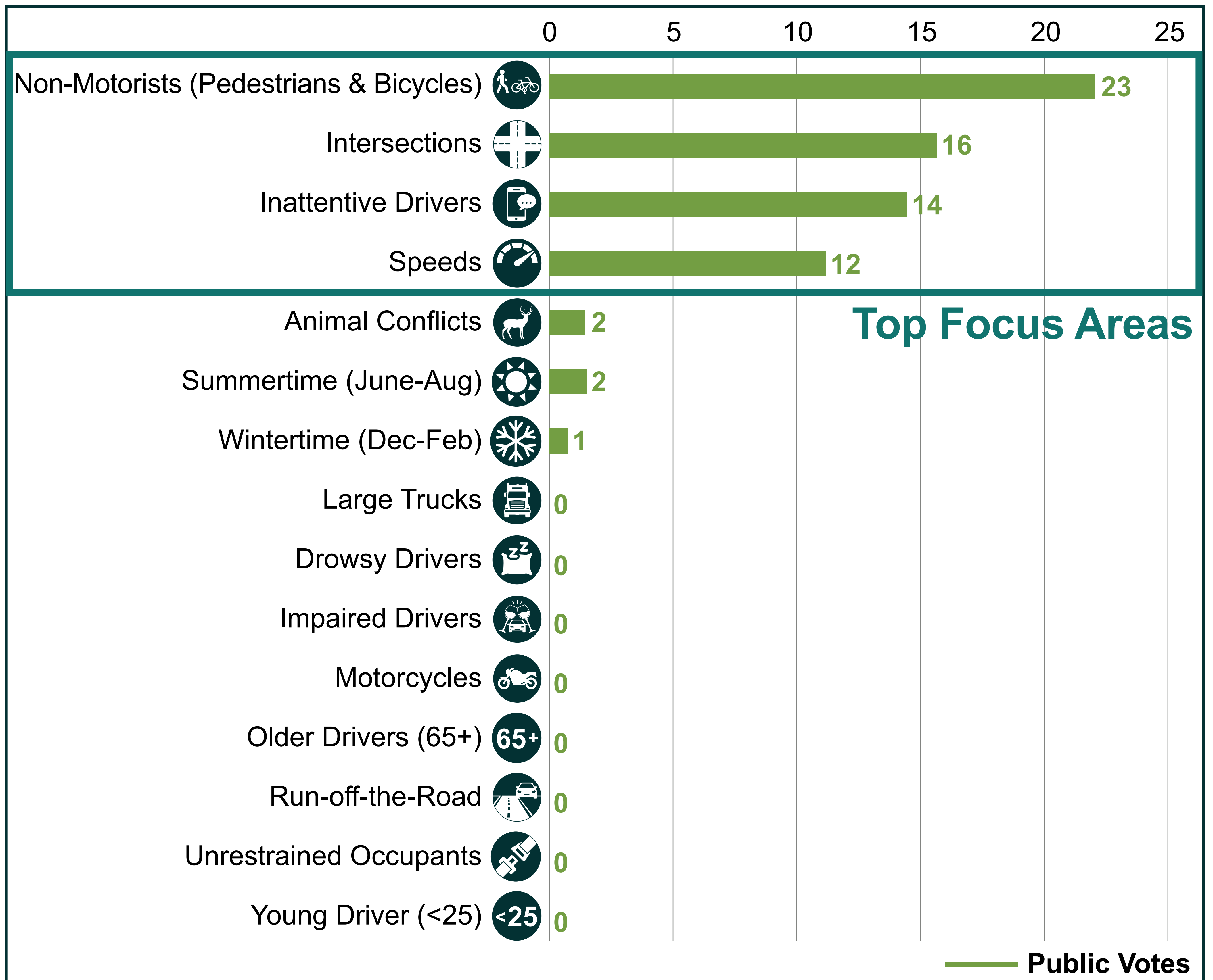
There are gaps in sidewalks, bike lanes, and trails. **Safe, connected, accessible pedestrian and bicycle facilities** are needed throughout the community. ”



Safe routes are needed for kids to walk and bike **to schools**. ”

Focus Areas and Goals

Attendees at the public meeting on June 5, 2024, were provided with four dot stickers to place on the transportation safety focus areas they thought the plan should prioritize. **The top four categories are shown in the chart below.**



ZERO

roadway fatalities and serious injuries



Focus Area Goals



Non-Motorists (Pedestrians & Bicycles): Develop non-motorist **count program** and **increase number of people who walk/bike**



Intersections: Complete intersection safety improvement projects at key intersections to **improve intersection safety**



Inattentive Drivers: **Reduce** the number of crashes involving **inattentive/distracted driving**



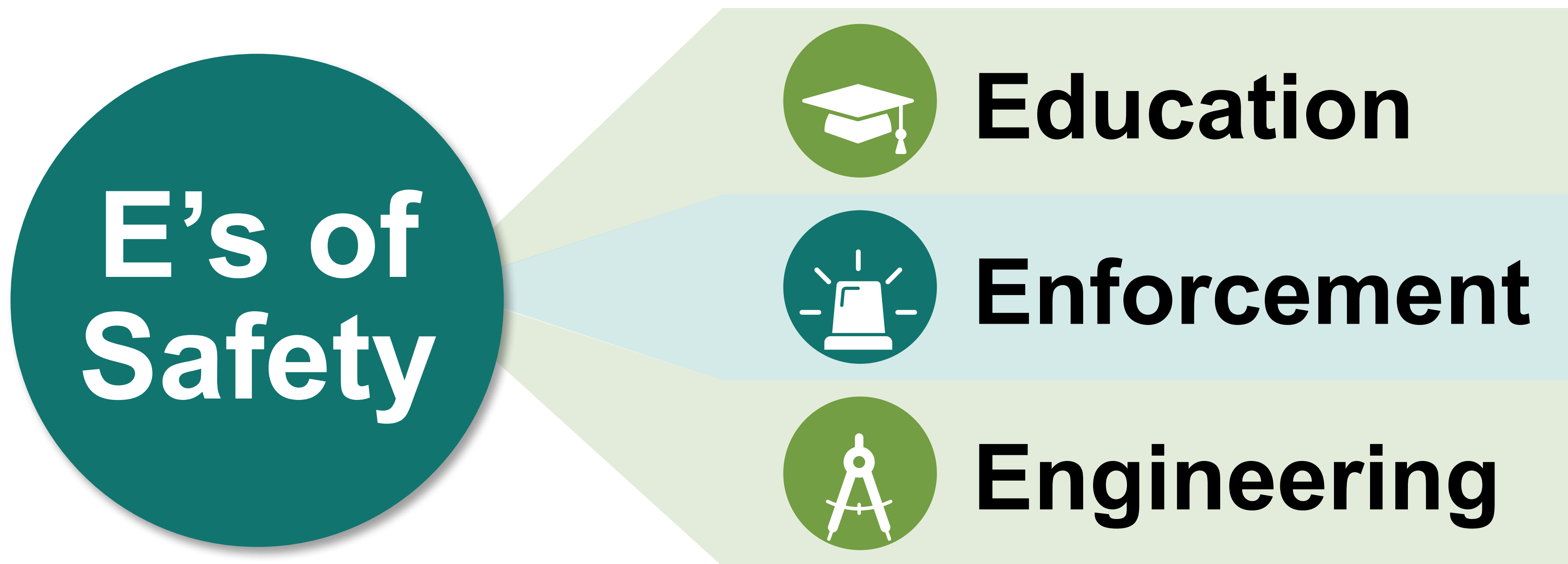
Speed: Complete speed related or traffic calming projects to **encourage slower speeds**

Safe Streets For All Approach

The Federal Highway Administration has developed the Safe System Approach to reach

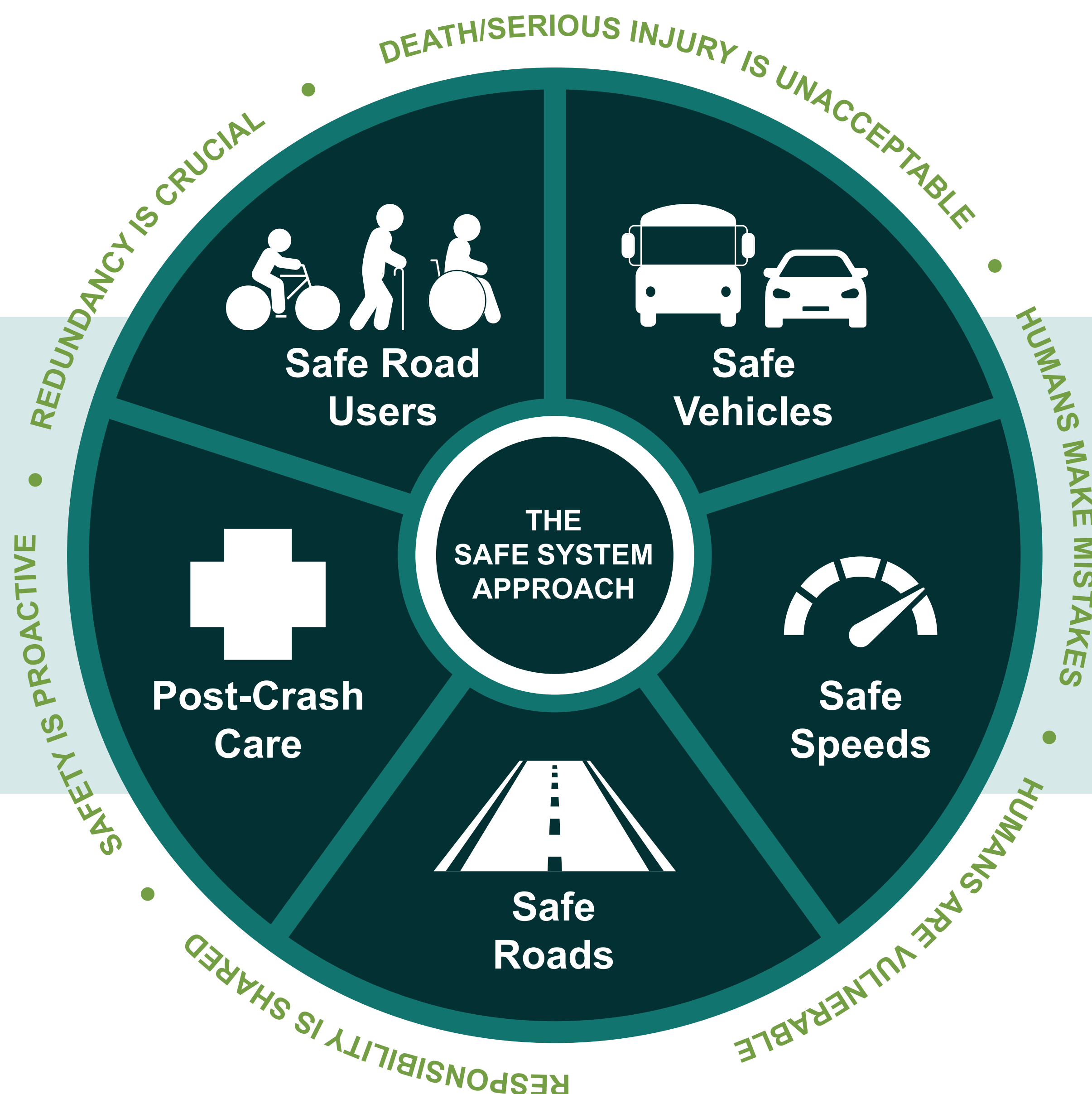
 **ZERO traffic deaths.** 

The approach is designed to **anticipate human mistakes and limitations** while preventing death and serious injury by **proactively identifying and addressing risks**.



Used for Whitefish SS4A Action Plan Recommendations

Improving transportation safety involved a **comprehensive approach** leveraging a range of perspectives and technical expertise. Strategies and projects identified for Whitefish will require partnerships between **engineers**, law **enforcement** personnel, and **educators**, along with support from **everyone** in the community! Timely response and coordination with **emergency medical service** providers also plays a critical role in reducing fatalities and serious injuries, and **equity** is an important consideration in addressing transportation disadvantage.



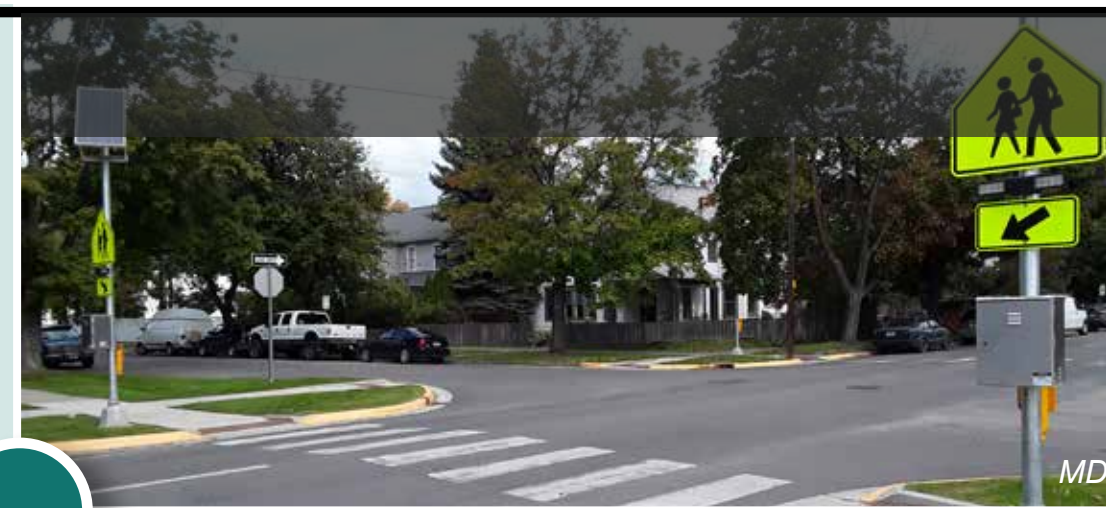
Strategy

Example Actions

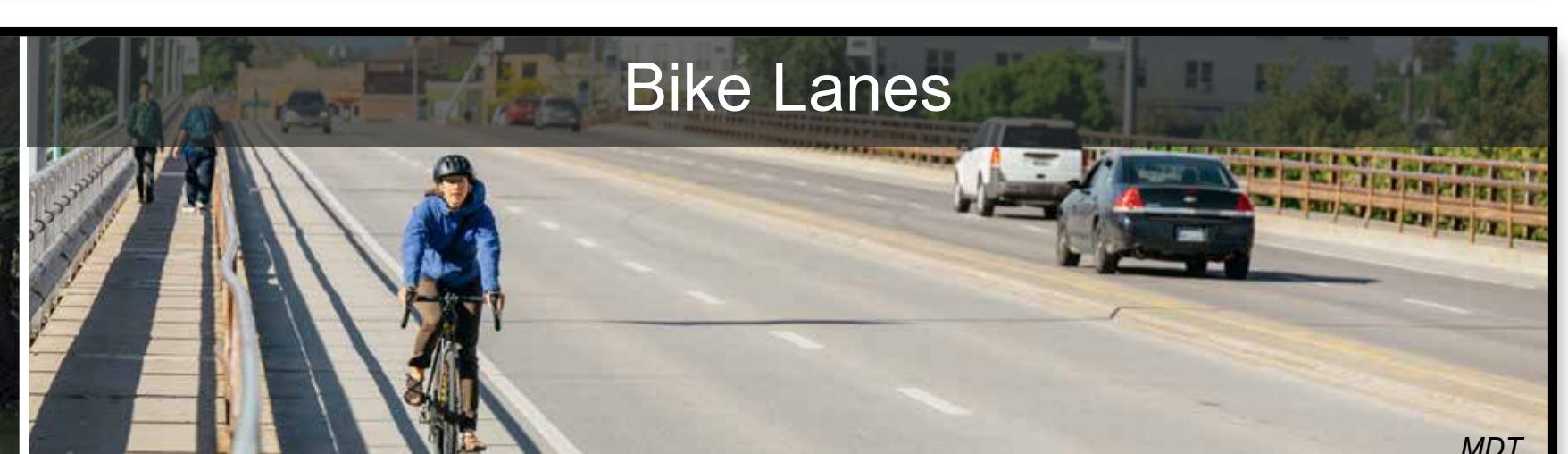
Maintain Existing Facilities



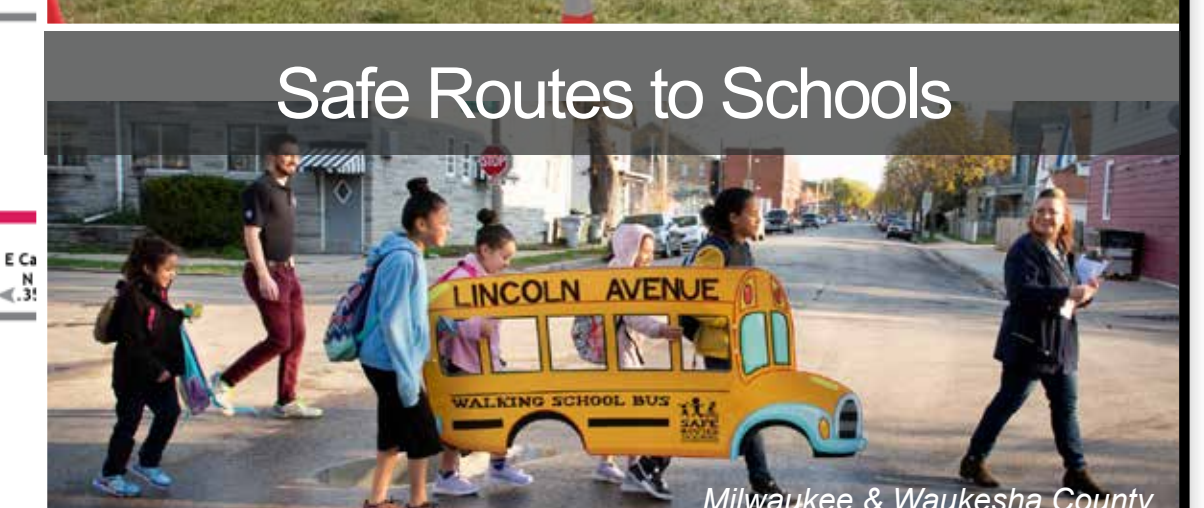
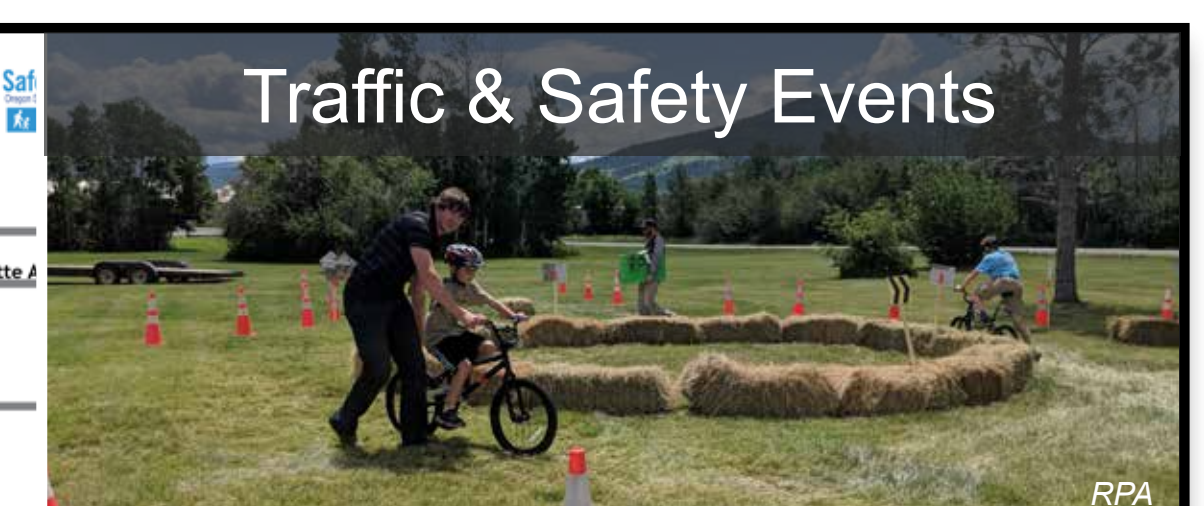
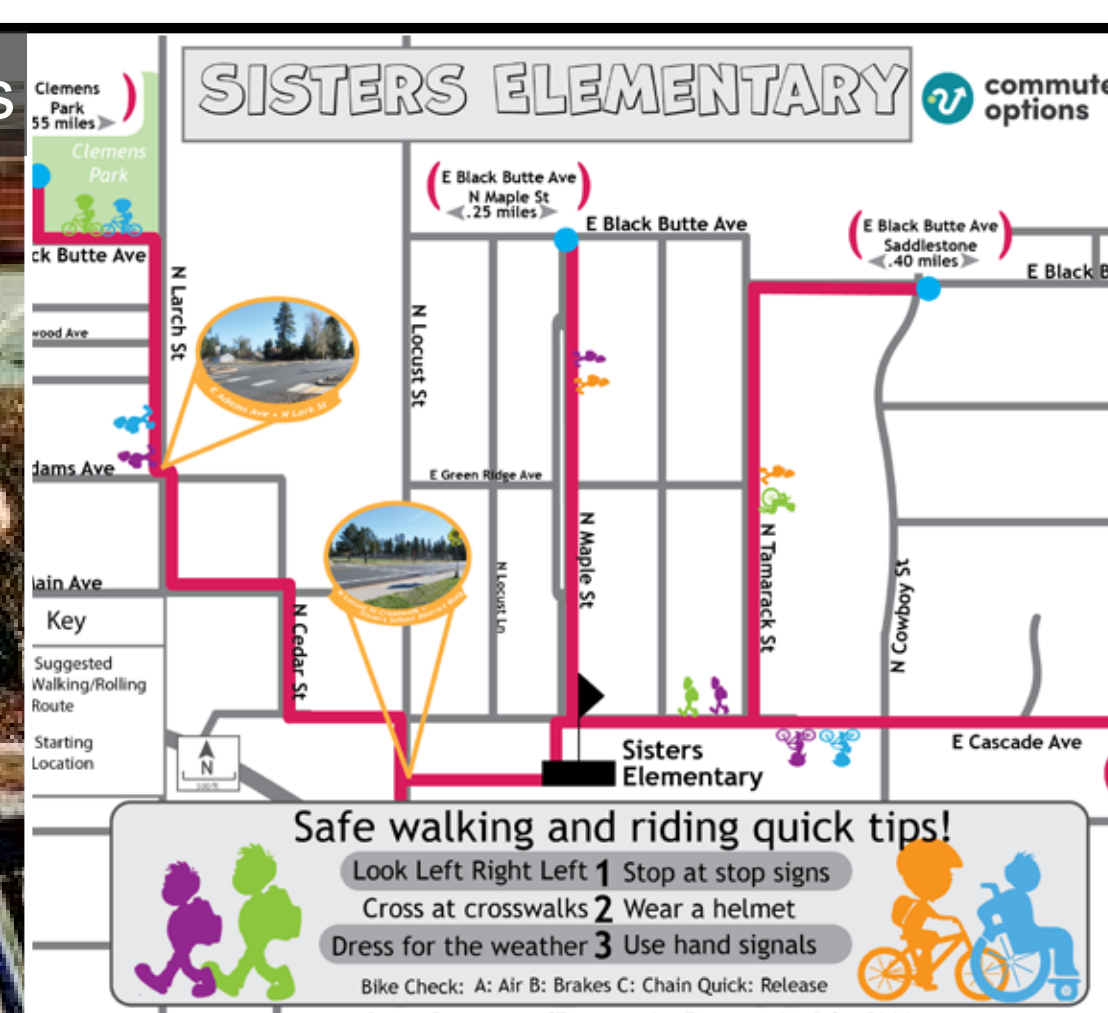
Enhance Existing Facilities



Install New Facilities



Encourage Safe/ Proper Walking/Biking



Focus Area

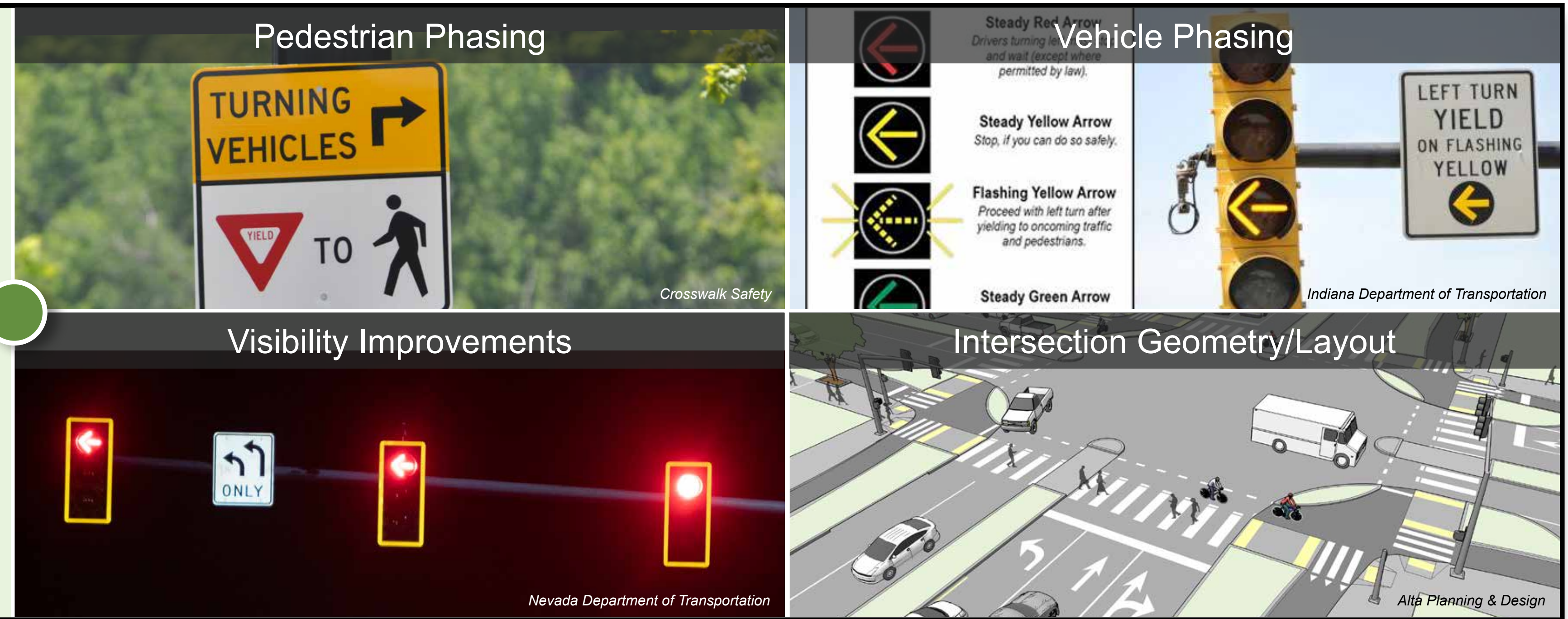


Non-Motorist Strategies

Strategy

Example Actions

Enhance Signalized Intersections



Enhance Unsignalized Intersections



Improve Intersection Visibility & Safety



Focus Area



Intersection Strategies

Strategy

Example Actions

Focus Area




Inattentive Driver Strategies

Focus Area



Speed Strategies

<p>Promote Distraction-Free Driving</p>	<p>Educational Campaigns</p>  <p>TRAVELERS INSTITUTE TRAVELERS</p>	<p>Promote Technology Solutions</p>  <p>Crunch Base</p>	<p>Target Teen Drivers</p> <p>PARENT-TO-PARENT AGREEMENT PARENT-TEEN DRIVING AGREEMENT</p> <p>DRIVING CONTRACTS</p> <p>AAA</p>
<p>Penalize Distracted Driving</p>	<p>High Visibility Enforcement</p> <p>PUT THE PHONE AWAY OR PAY</p> <p>Connecticut Dept. of Transportation</p> <p>Law Enforcement Training</p>  <p>Flathead Beacon</p>	<p>Distracted Driving Policies</p>  <p>VISUAL MANUAL COGNITIVE</p> <p>Ultimate Defensive Driving</p>	<p>Expanded Cell Phone Ordinance</p>  <p>Google Earth</p>
<p>Counteract Distracted Driving</p>	<p>Edge Line, Centerline, and Transverse Rumble Strips</p>  <p>Traffic Safety Supply</p>	<p>Lane Departure Warning Systems</p> <p>MyCar Does What.org Know More. Drive Safer.</p> <p>mycardoeswhat.org</p> <p>Separated Non-Motorist Facilities</p>  <p>Crossroads</p>	<p>Roadway Lighting</p>  <p>Cree Lighting</p>
<p>Review Posted Limits</p>	<p>Speed Studies</p>  <p>NACTO</p>	<p>Special Speed Zones</p>  <p>TrafficCalm</p>	<p>Jurisdiction-Wide Speed Limits</p>  <p>Bainbridge Island Chamber of Commerce</p>
<p>Reduce Vehicular Travel Speeds</p>	<p>Traffic Calming</p>  <p>City of Bozeman</p>	<p>Speed Enforcement</p>  <p>Western Systems</p>	<p>Education Campaigns</p>  <p>Clear Roads</p>

Proposed Project Locations

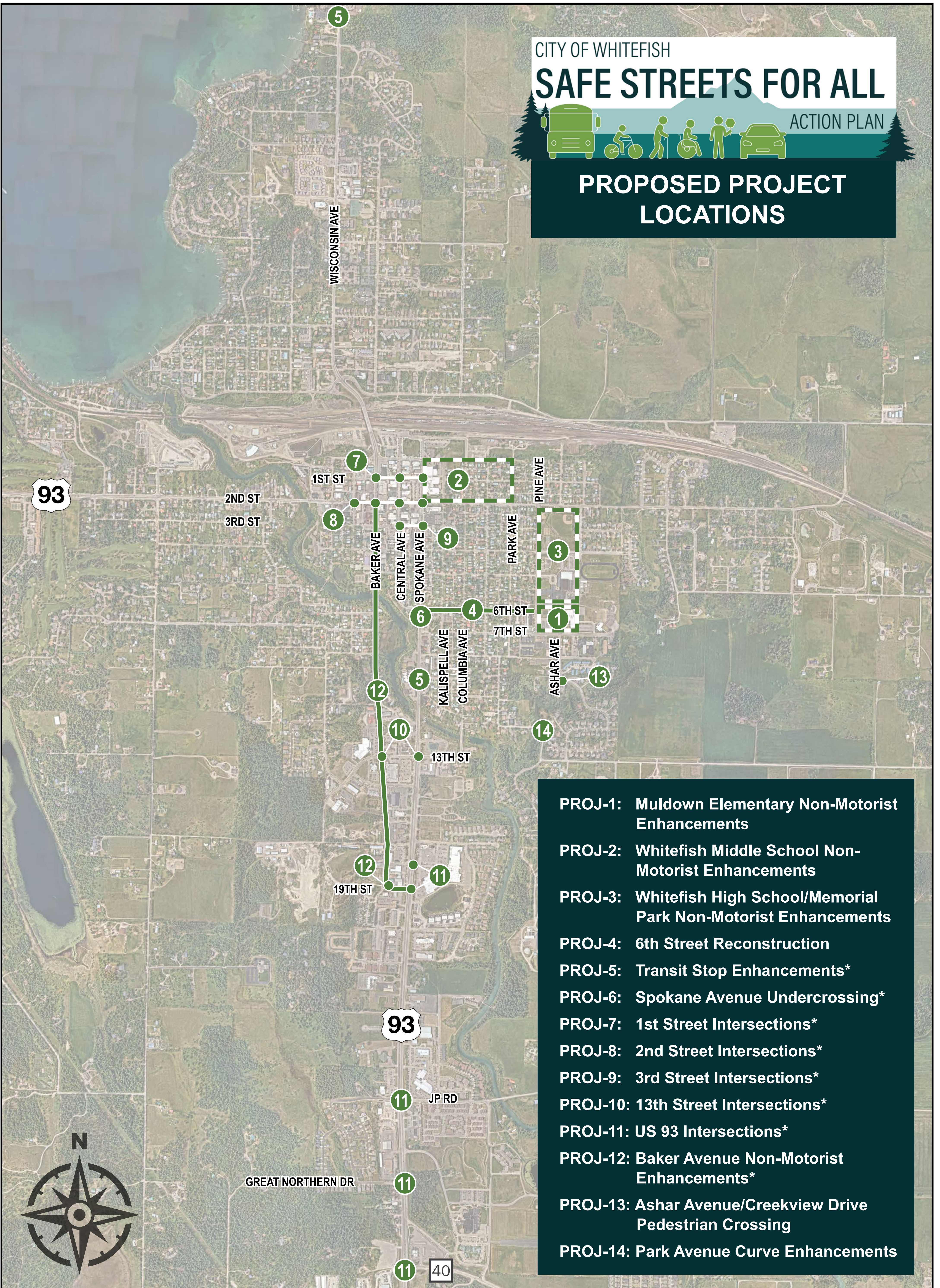
CITY OF WHITEFISH

SAFE STREETS FOR ALL

ACTION PLAN



PROPOSED PROJECT LOCATIONS



- PROJ-1:** Muldown Elementary Non-Motorist Enhancements
- PROJ-2:** Whitefish Middle School Non-Motorist Enhancements
- PROJ-3:** Whitefish High School/Memorial Park Non-Motorist Enhancements
- PROJ-4:** 6th Street Reconstruction
- PROJ-5:** Transit Stop Enhancements*
- PROJ-6:** Spokane Avenue Undercrossing*
- PROJ-7:** 1st Street Intersections*
- PROJ-8:** 2nd Street Intersections*
- PROJ-9:** 3rd Street Intersections*
- PROJ-10:** 13th Street Intersections*
- PROJ-11:** US 93 Intersections*
- PROJ-12:** Baker Avenue Non-Motorist Enhancements*
- PROJ-13:** Ashar Avenue/Creekview Drive Pedestrian Crossing
- PROJ-14:** Park Avenue Curve Enhancements



*Potential projects located on MDT routes would require additional study and coordination with MDT to proceed.

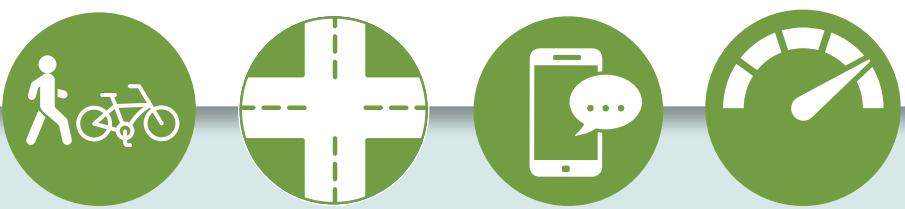
TELL US WHICH LOCATIONS YOU CARE ABOUT MOST!

Place your beads in the jars corresponding to each project to indicate your top priorities.

Based on historic crash data and community input, we have identified the following locations for targeted improvement projects.

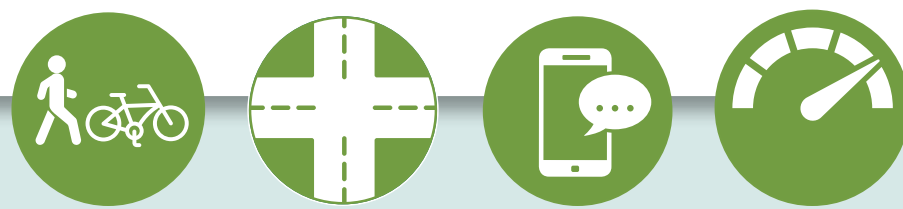
PROJ-1 Muldown Elementary Non-Motorist Enhancements

- 6th & Pine
- 7th & Pine
- 7th & Ashar



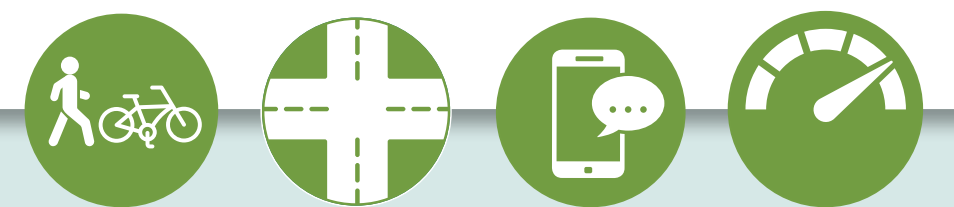
PROJ-2 Whitefish Middle School Non-Motorist Enhancements

- 1st St Segment
- 1st & Spokane
- 2nd & Kalispell



PROJ-3 Whitefish High School/Memorial Park Non-Motorist Enhancements

- Memorial Park Vicinity
- School Perimeter
- Fir Ave, 4th Street, Pine Ave
- 4th & Fir, 5th & Pine



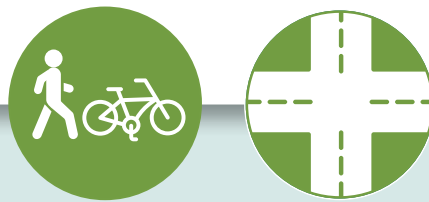
PROJ-4 6th Street Reconstruction

- 6th St from Spokane to Pine



PROJ-5 Transit Stop Enhancements

- The Pine Lodge (9th & Spokane)
- The Lodge at Whitefish Lake (Wisconsin Ave)



PROJ-6 Spokane Avenue Undercrossing

- 6th & Spokane Vicinity



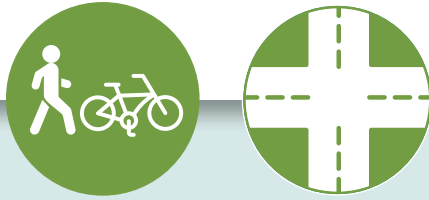
PROJ-7 1st Street Intersections

- 1st & Spokane
- 1st & Central
- 1st & Baker



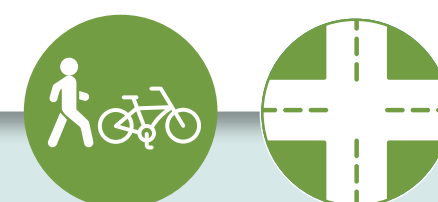
PROJ-8 2nd Street Intersections

- 2nd & Spokane
- 2nd & Central
- 2nd & Baker
- 2nd & Lupfer



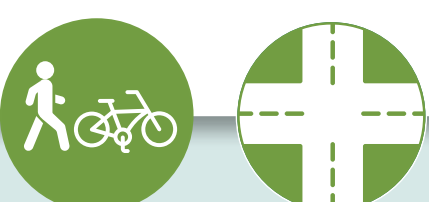
PROJ-9 3rd Street Intersections

- 3rd & Spokane
- 3rd & Central



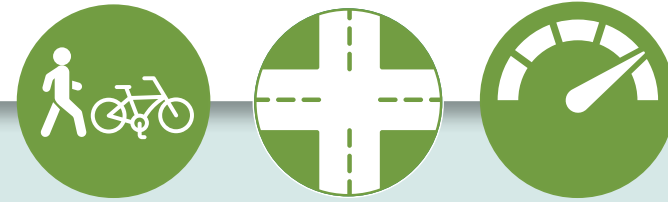
PROJ-10 13th Street Intersections

- 13th & Baker
- 13th & Spokane



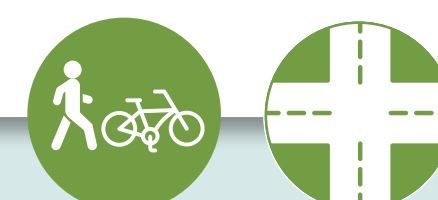
PROJ-11 US 93 Intersections

- US 93 & Commerce
- US 93 & 19th
- US 93 & JP Rd
- US 93 & Great Northern
- US 93 & MT 40



PROJ-12 Baker Avenue Non-Motorist Enhancements

- Baker Ave from 5th to 19th
- 19th & Baker



PROJ-13 Ashar Avenue/Creekview Drive Pedestrian Crossing

- Crossing South of Traffic Circle



PROJ-14 Park Avenue Curve Enhancements

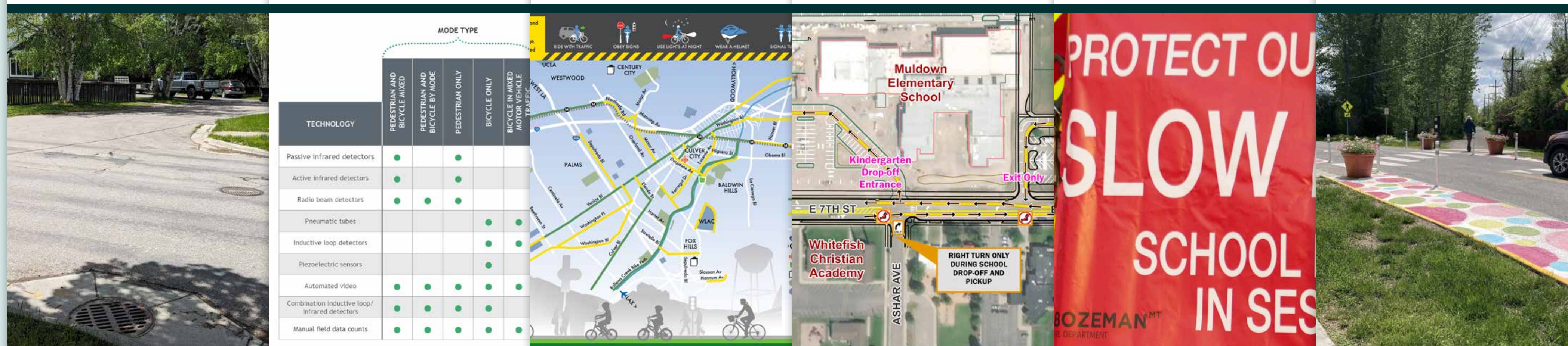
- Cow Creek Crossing Area



Proposed Programs and Policies

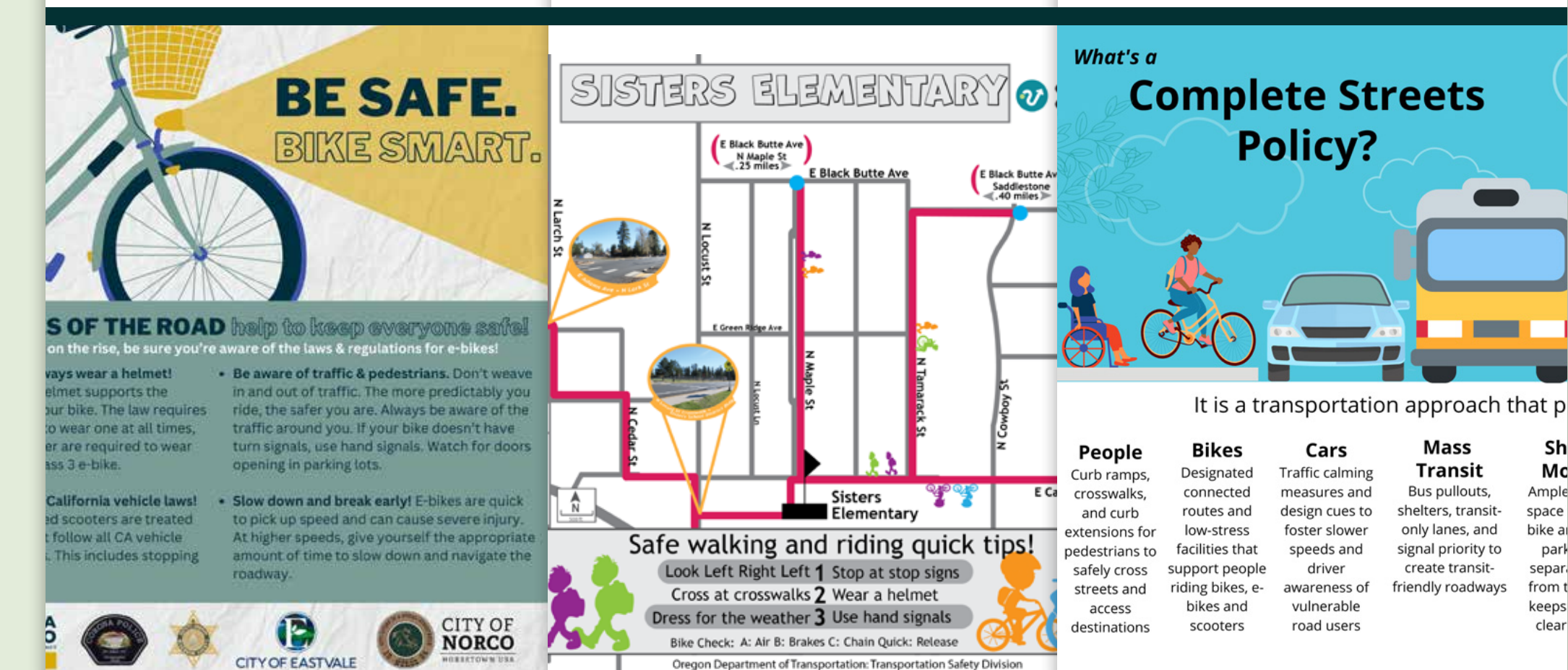
Programs

PROG-1	PROG-2	PROG-3	PROG-4	PROG-5	PROG-6
Non-Motorized Audit	Non-Motorist Count Program	Walking/Biking/Transit Resources	School Traffic Safety Campaign	High Visibility Enforcement	Traffic Calming Program
<ul style="list-style-type: none"> Identify/Prioritize/Upgrade Pedestrian & Bicycle Facilities Right-of-Way Audit with Disabled Individuals Published Maps with Connected, Accessible Routes 	<ul style="list-style-type: none"> Manual or Automated Count Data Bicycle and Pedestrian Coordinator 	<ul style="list-style-type: none"> Website, Maps, QR Codes, Safety Tips/Rules Bicycle and Pedestrian Coordinator 	<ul style="list-style-type: none"> Updated Drop-Off/Pick-Up Maps Educational Videos Events (Bike Rodeos, Helmet Fitting, Crosswalk Practice) 	<ul style="list-style-type: none"> Increased Presence/Visibility of Law Enforcement (Foot, Bicycle, Vehicle Patrols) Educational Campaigns – School Areas 	<ul style="list-style-type: none"> Defined Process for Development Review/Traffic Study Cost Sharing/Maintenance Agreements



Policies

POL-1	POL-2	POL-3
E-Bike Regulation Modifications	Formalized Safe Routes To School Policy	Complete Streets Policy
<ul style="list-style-type: none"> Downtown and Sidewalk Regulations 	<ul style="list-style-type: none"> Educational Campaigns Coordinated Infrastructure Improvements 	<ul style="list-style-type: none"> Formal Policy Adoption Potential Changes to Design Standards and City Codes



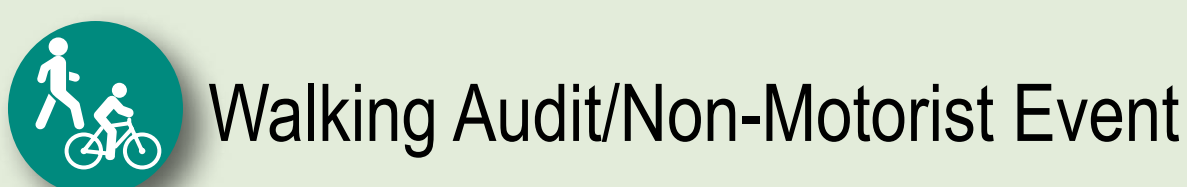
Next Steps

The **Action Plan** kicked off in **February 2024**. A draft plan is expected to be available for public review in **December 2024** with the final plan completed by the end of **January 2025**. Public feedback is welcome throughout the planning process!

City of Whitefish Safe Streets For All (SS4A) Action Plan - Schedule

WORK TASKS	MONTH											
	Feb-24	Mar-24	Apr-24	May-24	Jun-24	Jul-24	Aug-24	Sep-24	Oct-24	Nov-24	Dec-24	Jan-25
Project Management and Administration	[Green bar]											
Stakeholder and Public Involvement	[Green bar]											
Leadership Commitment and Goal Setting			[Green bar]									
Data Review and Analysis	[Green bar]											
Project Identification and Implementation					[Green bar]							
Policy and Process Changes							[Green bar]					
Action Plan and Progress Reporting									[Green bar]			
MEETINGS AND EVENTS												
Task Force Meetings (4)					In Person	Hybrid			In Person		In Person	
Public Meetings (2)												
Walking Audit (1)/Non-Motorist Event (1)												
City Council Coordination (2)									In Person		In Person	
DELIVERABLES												
Goal Summary Memo					[Green bar with document icon]							
Data Summary Memo					[Green bar with document icon]							
Concept Drawings/Details/Costs								[Green bar with document icon]				
Policy and Process Memo								[Green bar with document icon]				
Action Plan and Annual Reporting Template									[Green bar with document icon]			

Task Force Review
Public Comment Period



Questions?

Contact



Karin Hilding, PE
City of Whitefish Project Manager
(406) 863-2450
khilding@cityofwhitefish.org



Sarah Nicolai, PE, PTP
Consultant Project Manager
406-447-5038
snicolai@rpa-hln.com



To learn more about the
Whitefish SS4A Action Plan
visit the website:

WhitefishSafeStreets.com