



Strategy

Example Actions

Improve Intersection Visibility

Vegetation Management



Advance Warning Signs



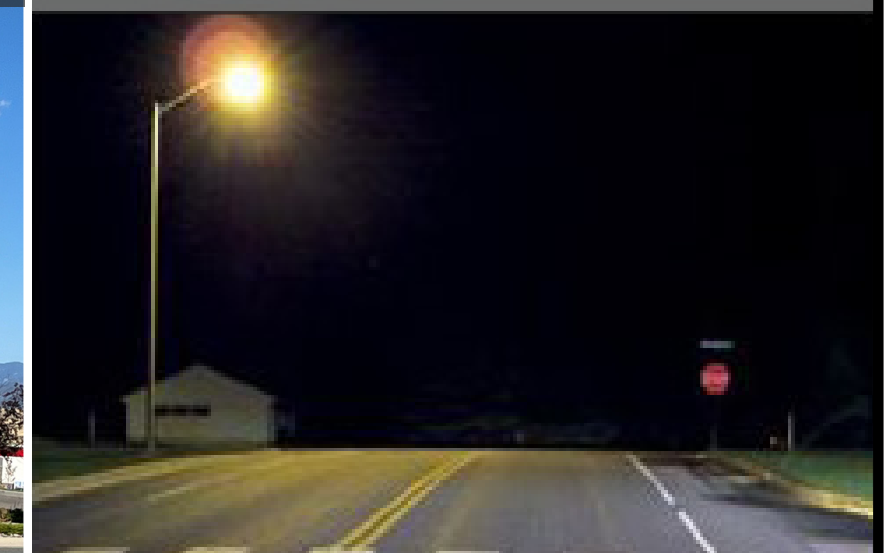
Snow Removal Management



No Parking Zones



Intersection Lighting



Enhance Unsignalized Intersections

Turn Lane Offset/Channelization



High Visibility Pavement Markings



Advance Warning Signs



Stop Bars



Flashing Stop Signs



Increased Traffic Control

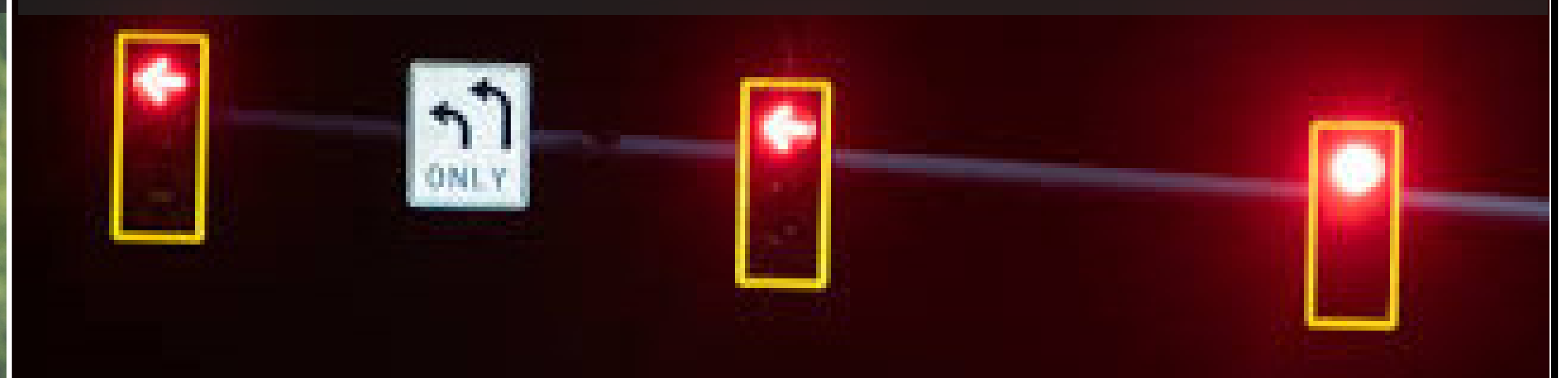


Install or Enhance Signalized Intersections

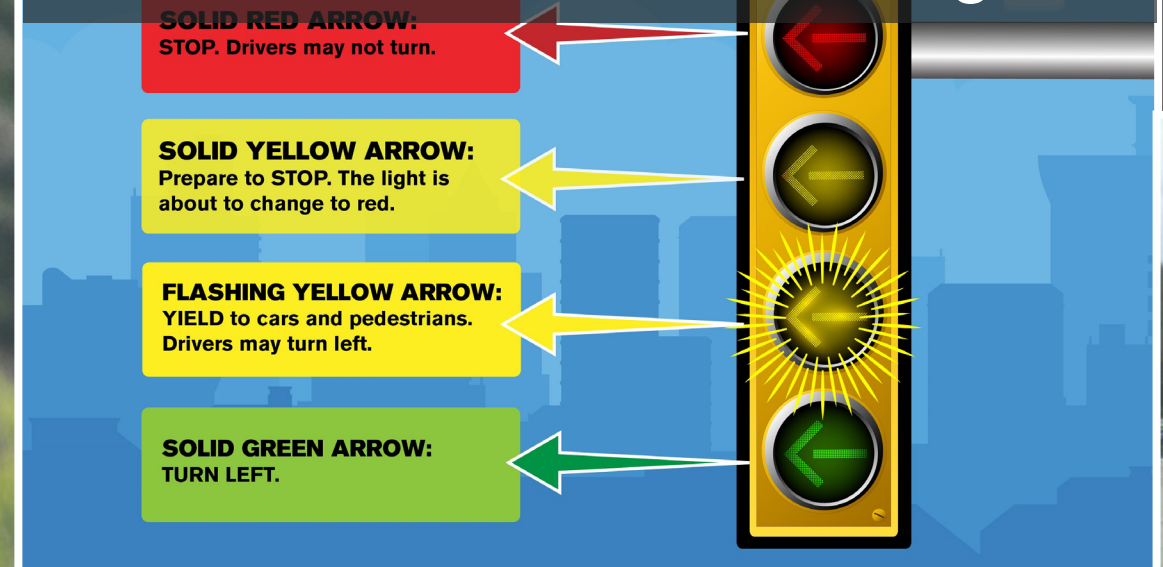
Pedestrian Signals/Phasing/Signs



Retroreflective Backplates



Left Turn Lanes/Phasing



Lane Use Signs & Pavement Markings



Focus Area

<25

65+

Driver Age Strategies

Strategy

Educate Young Drivers on Safe Driving Practices

Ensure Older Drivers are Fit to Drive

Design the Transportation Systems to Ensure Accessibility for Users of All Ages

Example Actions

Enhance Access to Other Driver Education



Educate Out of State University Students

- UPGRADING TIRES
- TUNING UP BATTERY
- UPGRADING LIGHTS
- INSTALLING WINDSHIELD WIPERS
- KEEPING EMERGENCY KIT
- DRIVING SLOW



Enforce GDL Restrictions

Montana GDL Steps:

Restrictions

Seatbelts required – for everyone – all the time

Passengers – First 6 months – only one
Second 6 months – up to three

Best Practices: No passengers

Graduated Driver License



Crash Avoidance Advanced Driver Assist Systems



Adaptive Vehicle Devices



Formal Courses for Older Drivers

NSC Defensive Driving Course
Mature Driver
10th Edition

Educate Caregivers/Assess Driving Ability

Occupational Profile:

Higher Risk: Evidence is **Strong**; Above thresholds of impairment in most areas.

Risk: Degree to which impairment affects fitness-to-drive must be addressed.
• Determine driving potential now and in the future
• Consider need for Comprehensive Driving Evaluation

Lower Risk: Evidence is **weak**; below threshold for impairment that would affect Fitness to Drive.



Occupational Therapy Intervention With Individualized Plan for Mobility Includes:

• Promote driving retirement
• Mobility preservation through supportive transportation

• Rehab: To optimize subskills
• Assess readiness for comprehensive driving evaluation "at the right time"
• Consider need for services to improve Fitness to Drive

• Encourage fitness, strength, flexibility
• Promote driver safety programs & CarFit
• Discuss warning signs

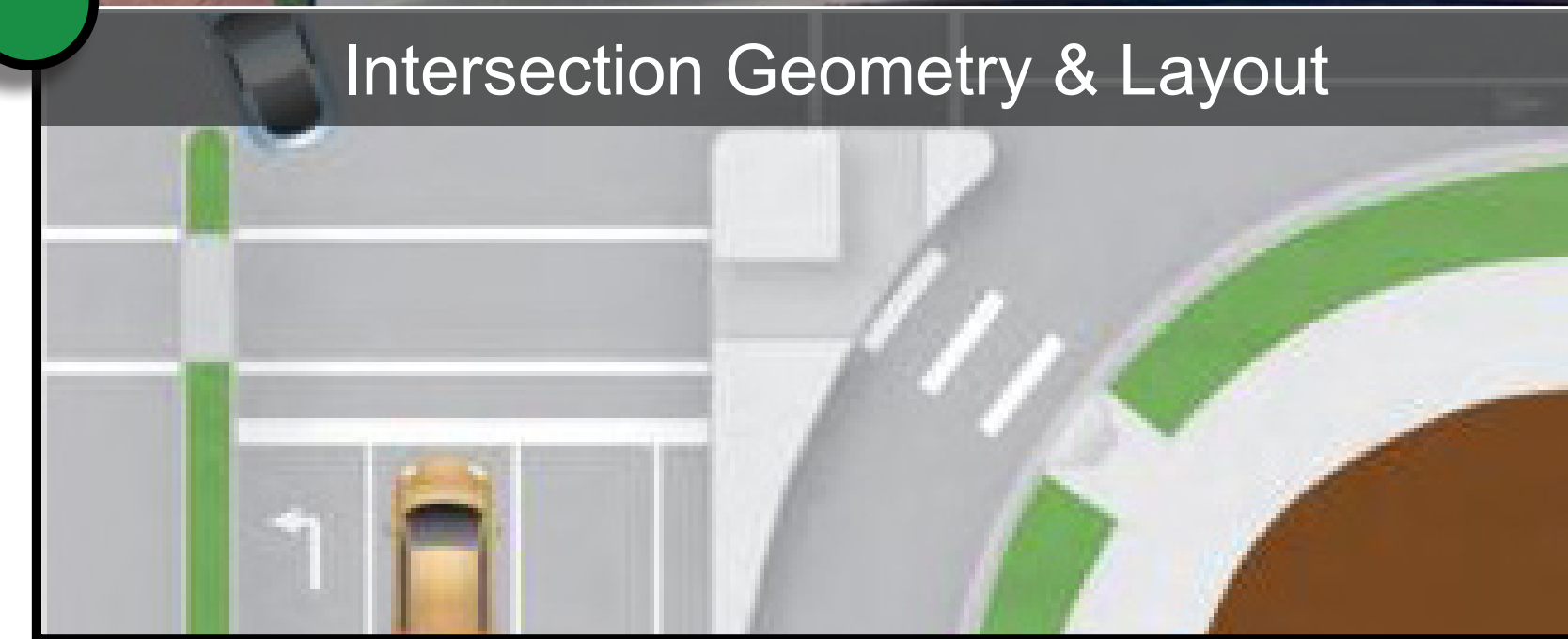
Transit & Ride Share Opportunities



Accessible Walking & Biking Facilities



Intersection Geometry & Layout



Sign Legibility & Visibility

CONTRAST

VIBRATION

LOW VISIBILITY

HIGH VISIBILITY

Example Actions

Strategy

Focus Area



High Risk Behavior Strategies

Promote Safe Driving Behaviors

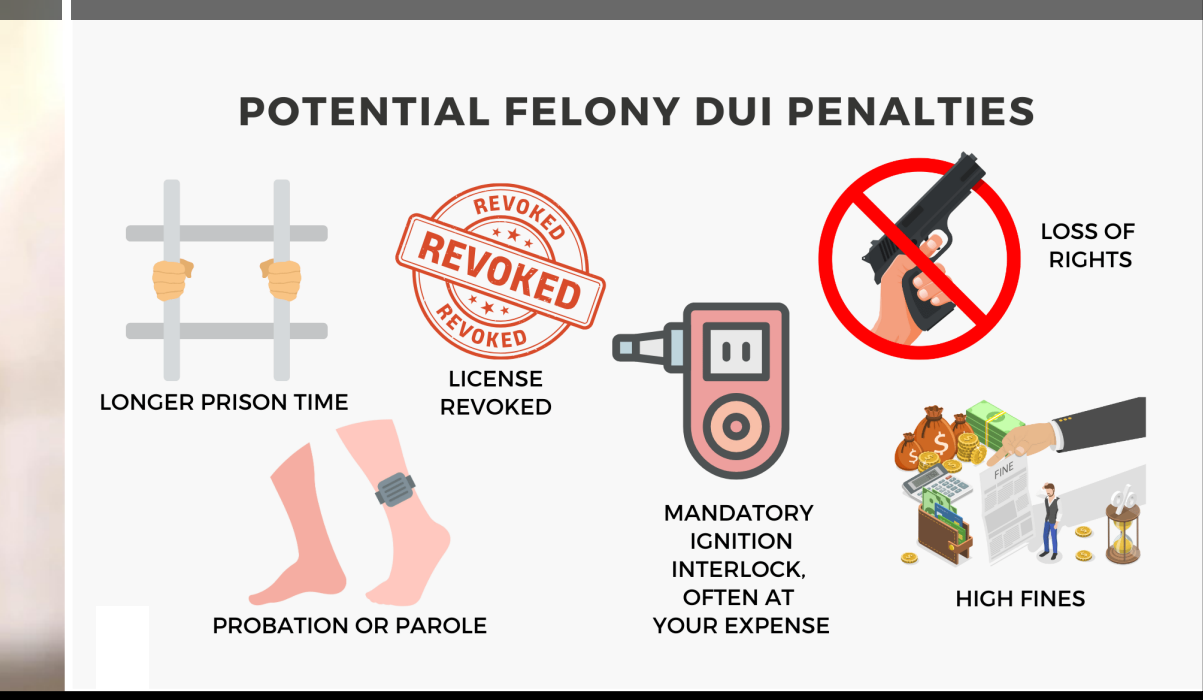
Defensive Driving Courses



Civilian Dash Cams



Lobby State for Law Changes

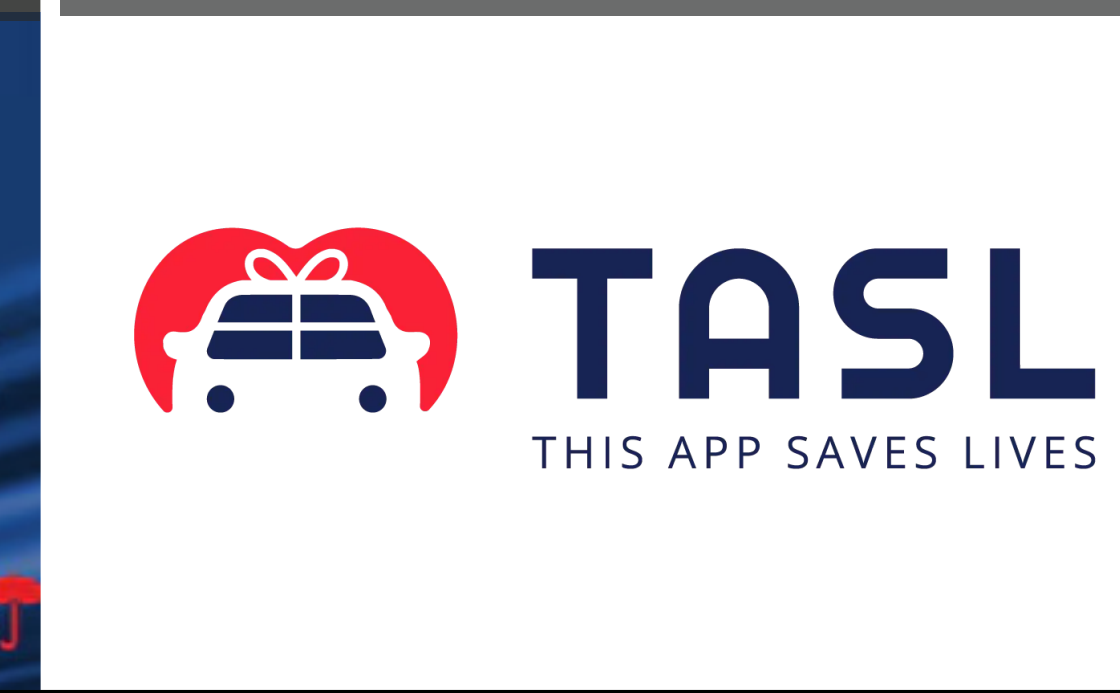


Decrease Distracted Driving

Educational Campaigns



Promote Technology Solutions



Target Teen Drivers



Eliminate Impaired Driving

Education Campaigns



Peer to Peer Programing (Fatal Vision Goggles)



Drug Recognition Experts



Manage Vehicular Travel Speeds

Traffic Calming



Speed Enforcement



Education Campaigns



Increase Occupant Protection

Car Seat Checks



Enforcement Campaigns



Education Campaigns

