

WELCOME!

Lakeside County Water
& Sewer District



Wastewater Treatment Update &
Collection System Improvements Project

Open
House

Stay Informed



Learn more about the project and why improvements are needed



Share your comments and questions



Visit the project website at:
rpa-eng.com/lcwsd/



Contact:



Brad Koenig
RPA Project Manager
(406) 447-5044
bkoenig@rpa-eng.com



SCAN ME

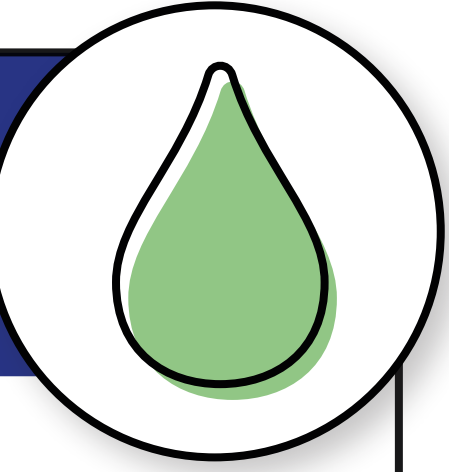
PROJECT OVERVIEW

HOW DOES THIS PROJECT BENEFIT LAKESIDE WATER & SEWER DISTRICT (LCWSD) CUSTOMERS?

- 💧 In addition to providing safeguards for human health and the natural environment, the project will enable LCWSD to maintain a stable rate structure for its customers.
- 💧 Grant funding from federal and state programs will enable the design and construction of facility upgrades while keeping fees affordable for ratepayers.
- 💧 **Future Collection System project coming!** 100% of the Collection System Improvements will be paid for by the developer.



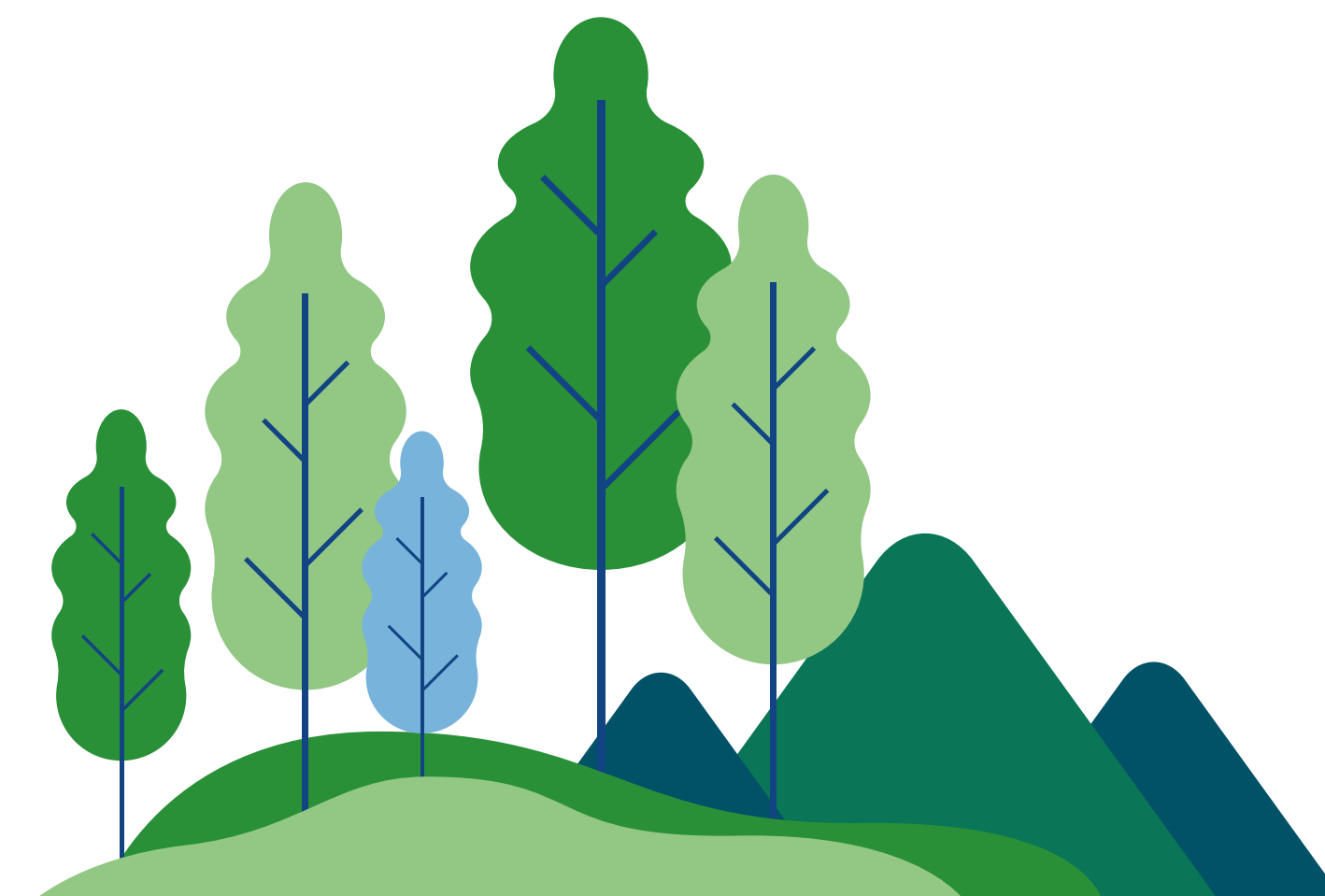
WHY IS LCWSD UPDATING ITS WASTEWATER TREATMENT FACILITY (WWTF)?



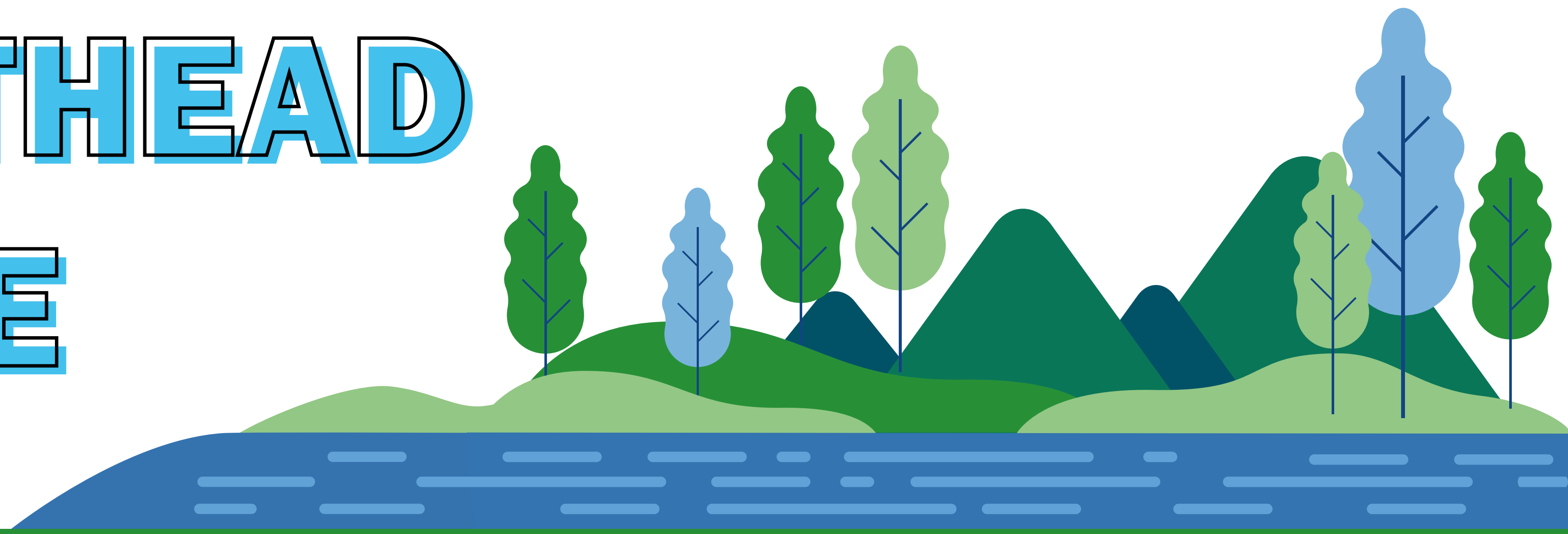
- 💧 The original LCWSD system was constructed in the 1980s to reduce public health hazards and nutrient loading into Flathead Lake.
- 💧 After nearly 40 years of service, the system is nearing the **end of its useful life** and has very little capacity to accept additional wastewater from ongoing growth and development in the area.
- 💧 A WWTF system upgrade is now needed to transition to **modern, efficient treatment methods** and **expand wastewater treatment capacity** to responsibly serve the regional community while continuing to protect Flathead Lake and the surrounding natural environment.
- 💧 The Collection System Improvements are needed to enhance system reliability and increase capacity.



- 💧 No volume of wastewater exceeding the existing WWTF's capacity will be accepted until Phase II improvements are constructed.
- 💧 No septage will be accepted until construction Phase II is completed.



PROTECTING FLATHEAD LAKE



STEWARDSHIP OF FLATHEAD LAKE

- 💧 The original LCWSD facility was constructed using U.S. EPA funding in 1987 to install a wastewater collection and treatment system as a means to protect Flathead Lake.
- 💧 Providing this service remains the goal of the District today.
- 💧 The District intends to continue its environmental stewardship by effectively collecting and treating wastewater within the District's service area.
- 💧 Septic systems can release harmful pathogens and nutrients into groundwater and surface water, leading to contamination of nearby water bodies.
- 💧 Septic systems located adjacent to Flathead Lake pose risks to human health and aquatic life, eliminating these septic systems was and continues to be a main focus of the District.
- 💧 Wastewater collection mains and lift stations convey wastewater from the LCWSD service area, including homes located along the lake shore, to the LCWSD Wastewater Treatment Facility (WWTF) where the wastewater is effectively treated in a single location. WWTF upgrades will increase the treatment efficiency and reliability.



WWTF UPGRADES

PHASE I UPDATE

CONSTRUCTION
UNDERWAY!

The Phase I Project Includes

- 💧 A new Headworks Building (Screening and Grit Removal) at the Existing WWTF Site
- 💧 Lift Station #10 Upgrades
- 💧 Construction of the Septage Receiving Facility
- 💧 Odor Control Facilities at the Headworks (Sized for Phase I and Phase II of the WWTF Improvements) and the Septage Receiving Facility

Phase I Project Funding

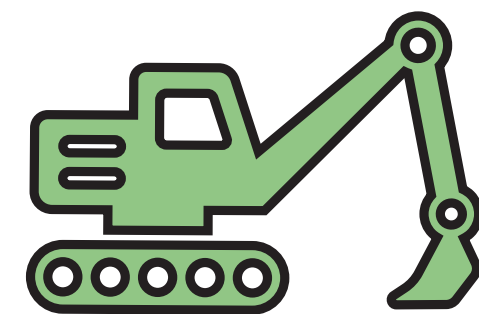
Phase I of the WWTF Improvements will primarily utilize grant funding.

Timeline



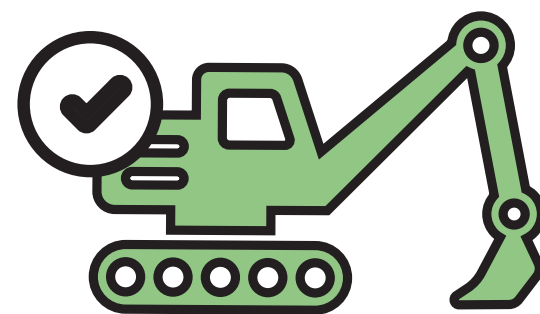
April 28, 2025

Groundwater Discharge
Permit Issued and
Environmental Assessment
Finalized



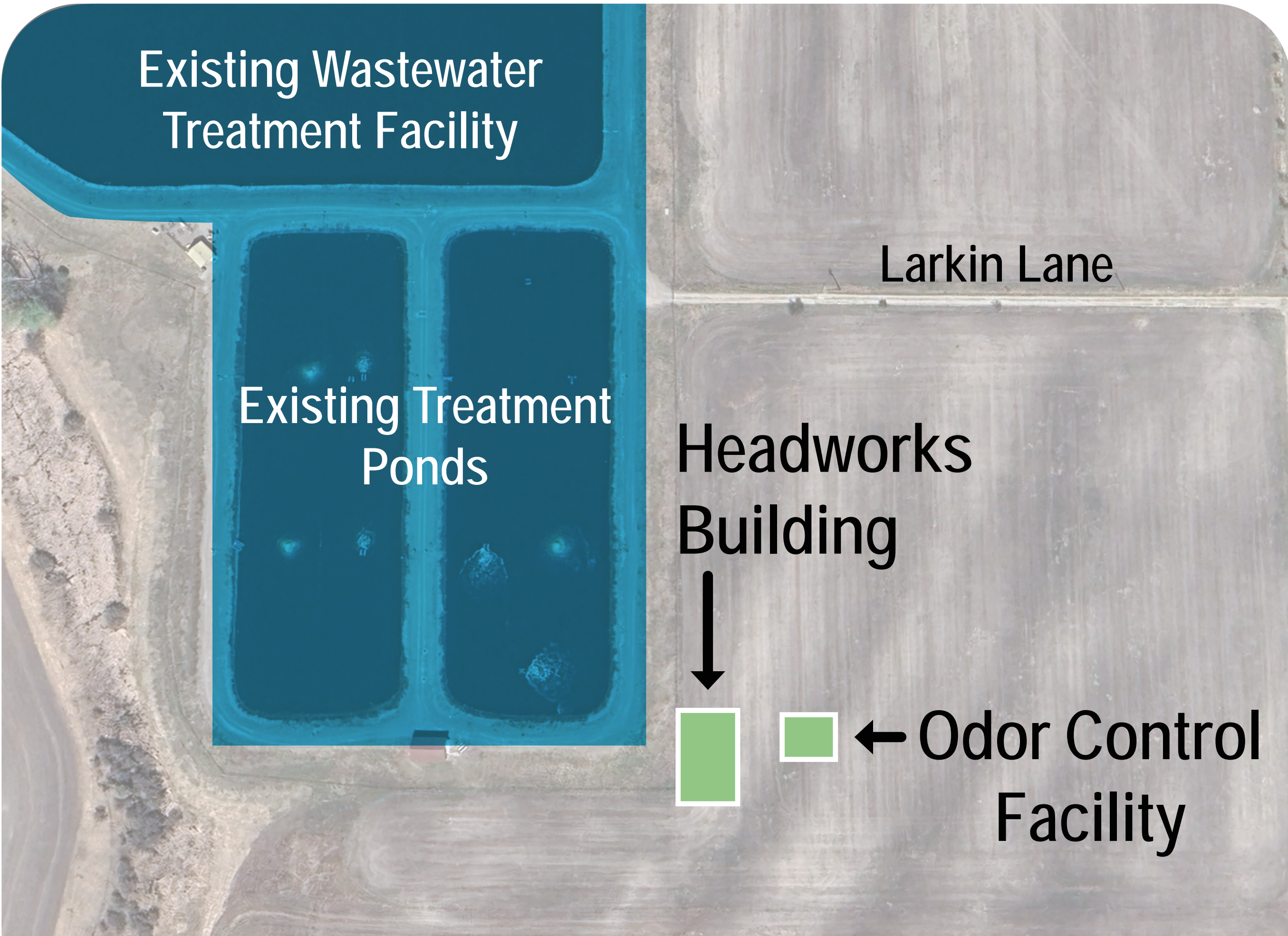
May 2025

Construction of Phase I
Improvements Begins



November 2025

Anticipated Phase I
Construction Completion



LIFT STATION #10 LOCATION MAP PHASE I IMPROVEMENT



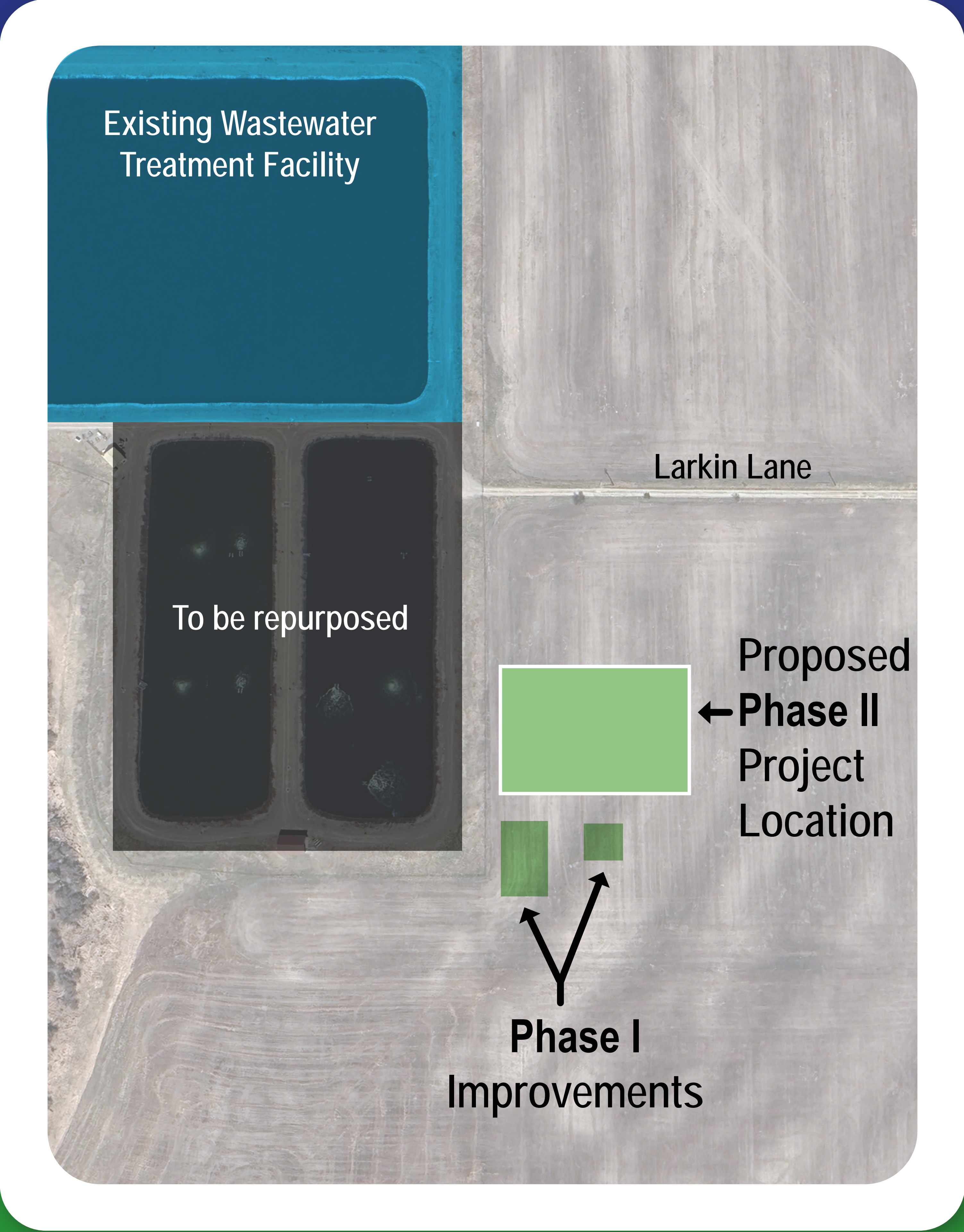
WWTF UPGRADES

PHASE II UPDATE

The Phase II Project Includes

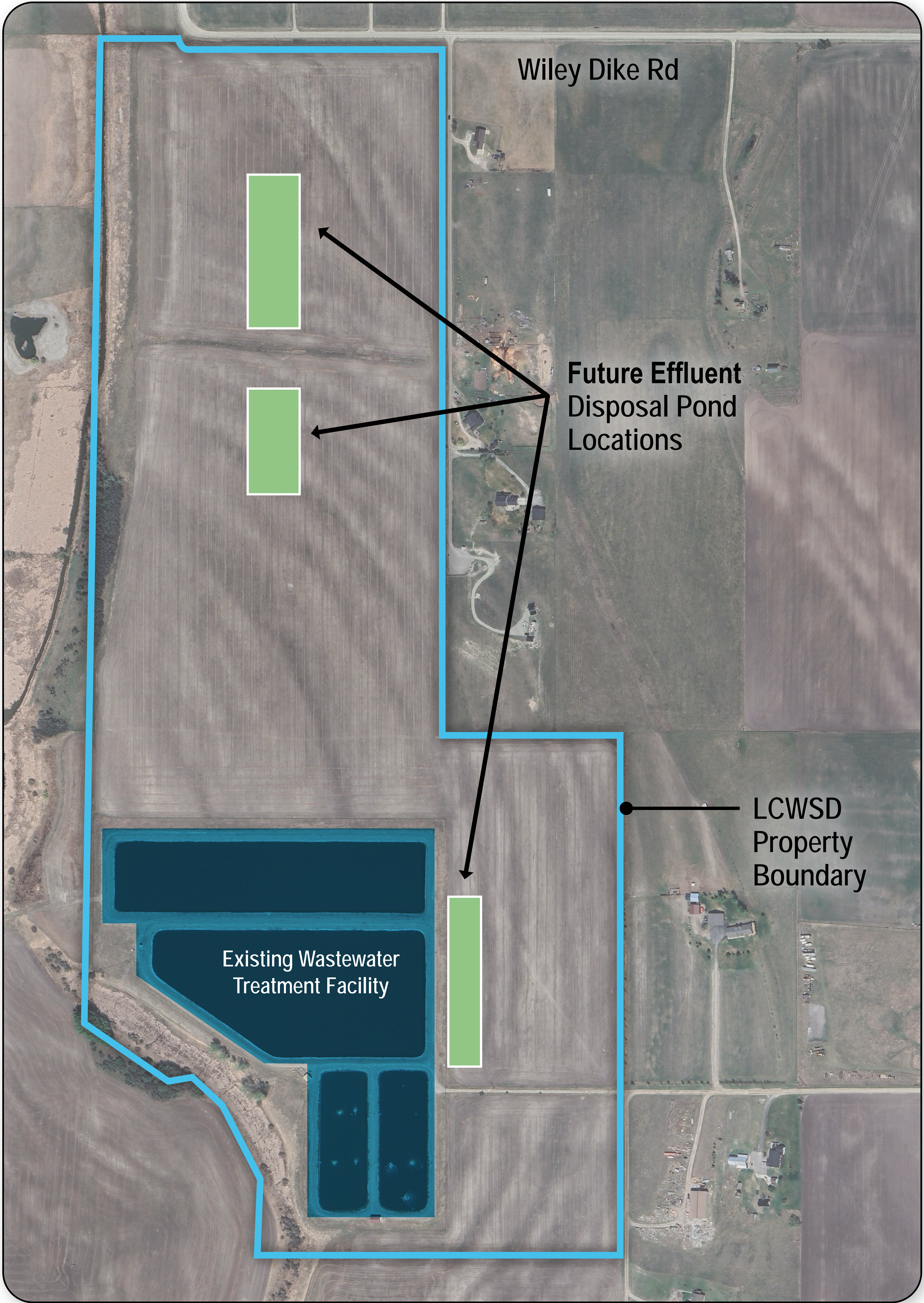
- Secondary Treatment
- Solids Handling
- Effluent Disposal

Timeline



GROUNDWATER DISPOSAL LOCATION MAP

PHASE II IMPROVEMENT



COLLECTION SYSTEM UPGRADES

UPCOMING PROJECT!

The collection system infrastructure was largely installed in 1987 and is in need of updating. Improvements to the Collection System will increase the capacity of the main wastewater trunk line along Highway 93 and several of the pump stations along this corridor will be upgraded.

Design of the Collection System Improvements is currently underway with surveyors on site for this project along Highway 93. Construction of improvements is expected to begin in 2026.


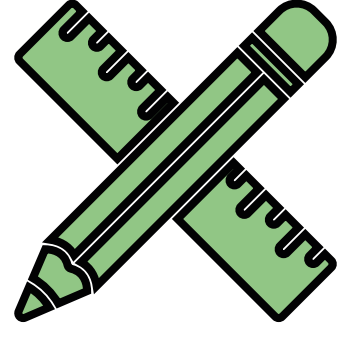
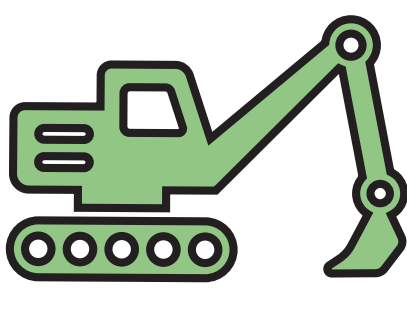
Project Objectives

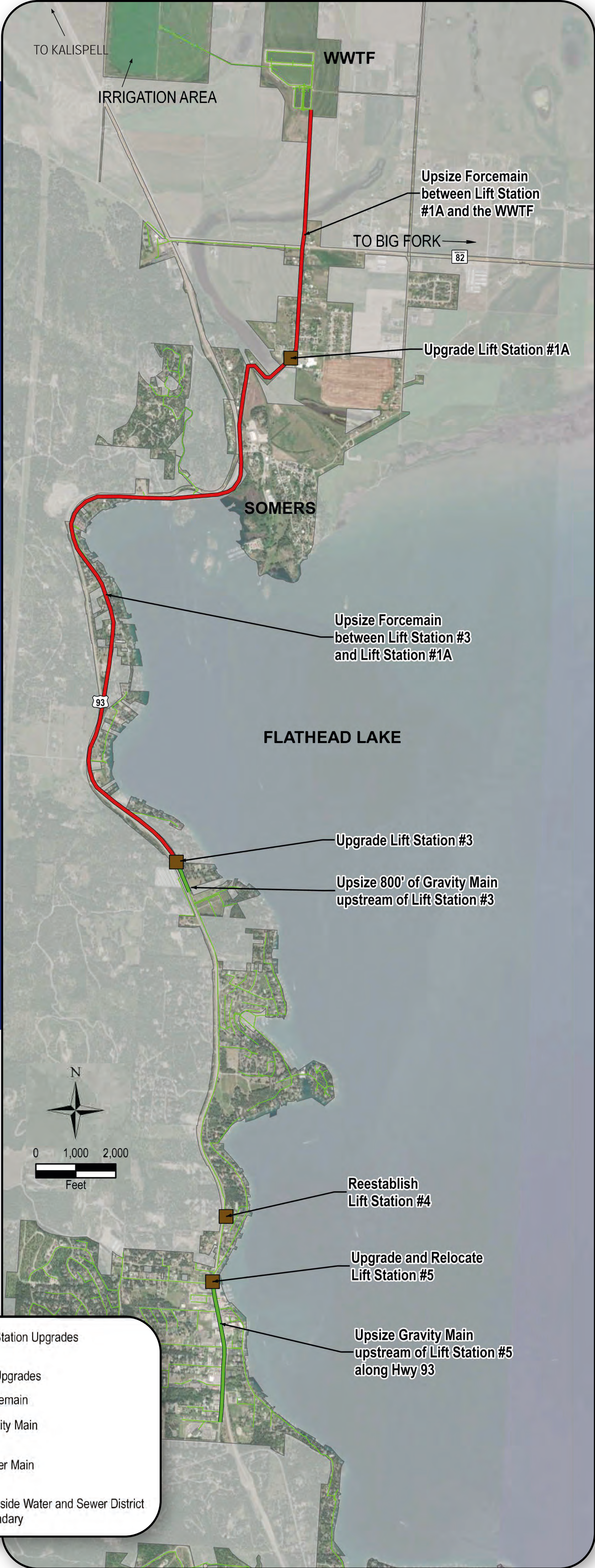
- 💧 Increase collection system capacity
- 💧 Update pumping infrastructure

Project Funding

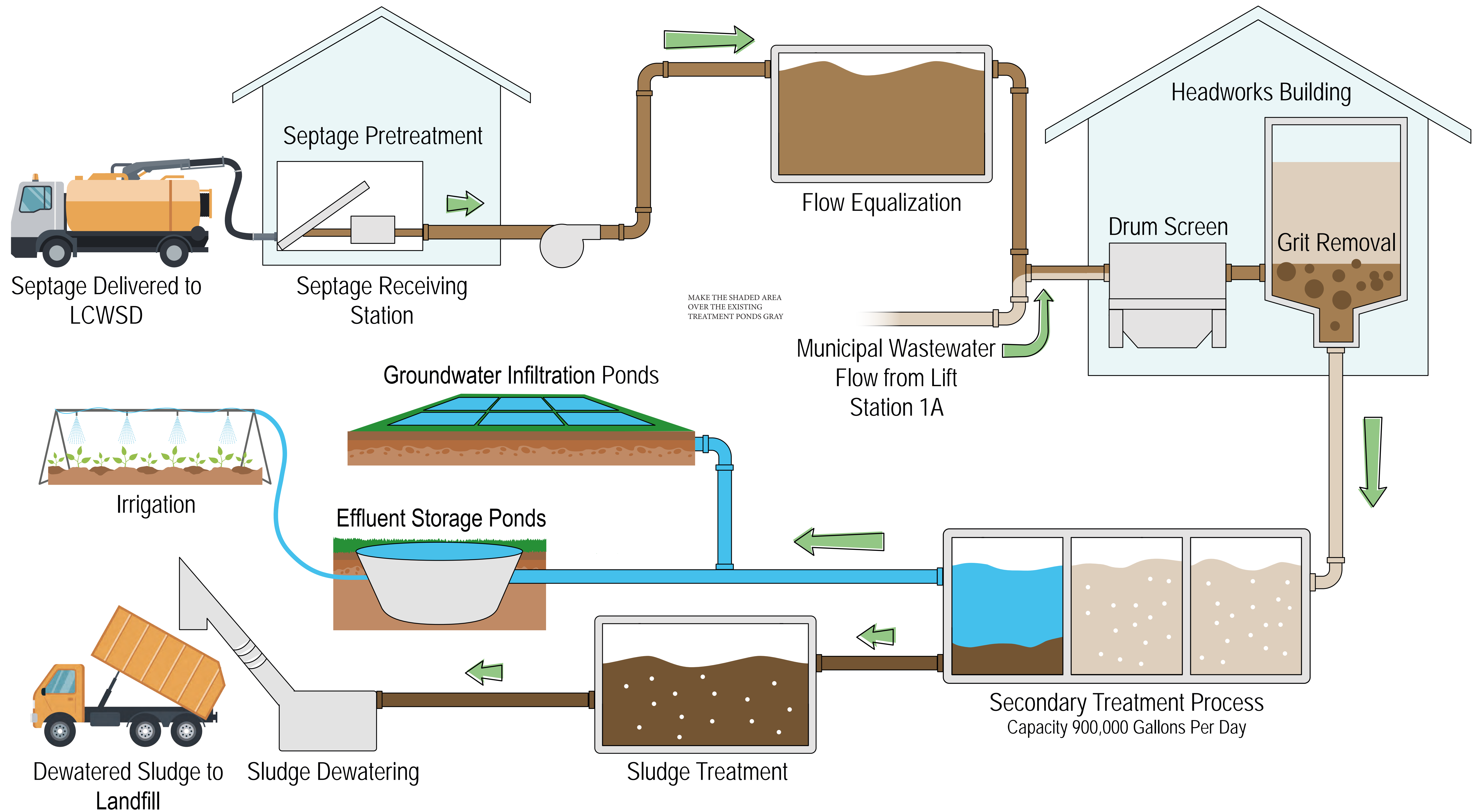
All improvements will be 100% paid for by the developer

Timeline

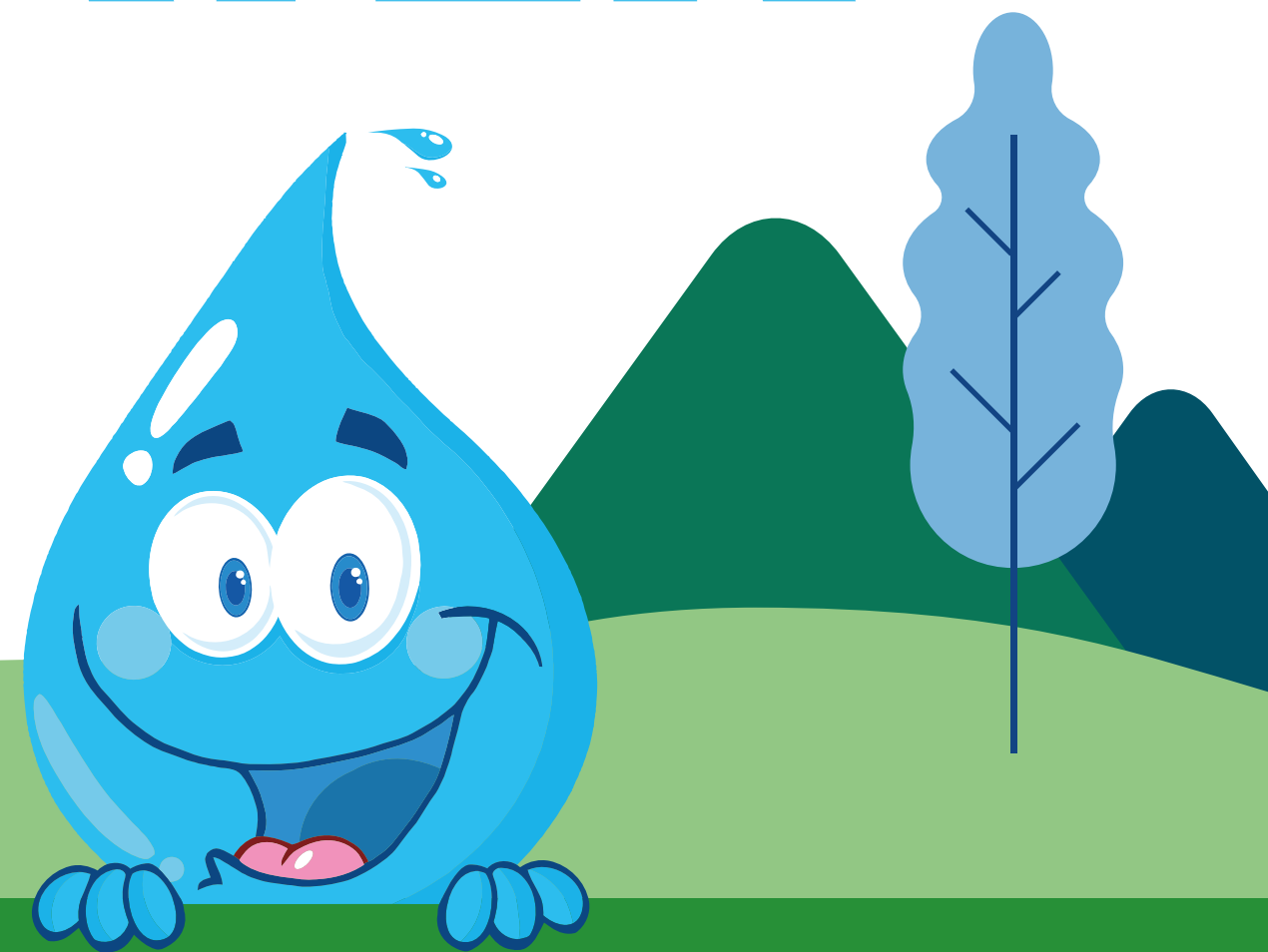
-  **April 2025**
Begin Project Survey
-  **Spring 2025 - Spring 2026**
Design Collection System Upgrades
-  **Spring 2026 - Fall 2027**
Construction of Collection System Upgrades



PROCESS FLOW DIAGRAM PHASE I & PHASE II



LCWSD WASTEWATER RATE OVERVIEW



EXISTING RATES

	Existing Base Rate	\$31.59
	Existing Variable Rate	\$2.43/1,000 gal
	Existing Average Combined Rate	\$43.74*

* Assumes 5,000 gal/month of wastewater generated per equivalent dwelling unit (EDU)

PROPOSED RATES

Wastewater rate increases are necessary to cover the system operation and maintenance expenses including:

- Additional LCWSD employee salary
- WWTF Manager salary
- Collection System operation and maintenance costs
- WWTF upgrade Phase I operation and maintenance costs
- WWTF upgrade Phase II operation and maintenance costs
- Phase I loan (\$1,084,573)
- Phase II possible loan (~\$20,000,000)

An initial wastewater rate increase of \$30/EDU/Month will be applied to LCWSD ratepayers in 2025. This increase is to prepare for upcoming collection and treatment operation and maintenance expenses associated with the WWTF Improvements.

	Proposed Base Rate	\$61.59
	Proposed Variable Rate	\$2.43/1,000 gal
	Proposed Average Combined Rate	\$73.74*

* Assumes 5,000 gal/month of wastewater generated per EDU

NOTICE: WASTEWATER RATE HEARING TO FOLLOW