

May 2025 Update

### WWTF UPGRADES PROJECT

The original LCWSD system was constructed in 1987 to reduce public health hazards and nutrient loading into Flathead Lake. After nearly 40 years of service, the system is nearing the end of its useful life and has very little capacity to accept additional wastewater from ongoing growth and development in the area. A WWTF system upgrade is needed to transition to modern, efficient treatment methods and expand wastewater treatment capacity to responsibly serve the regional community while continuing to protect Flathead Lake and the surrounding natural environment. Similarly, collection System Improvements are needed to enhance system reliability and increase capacity.

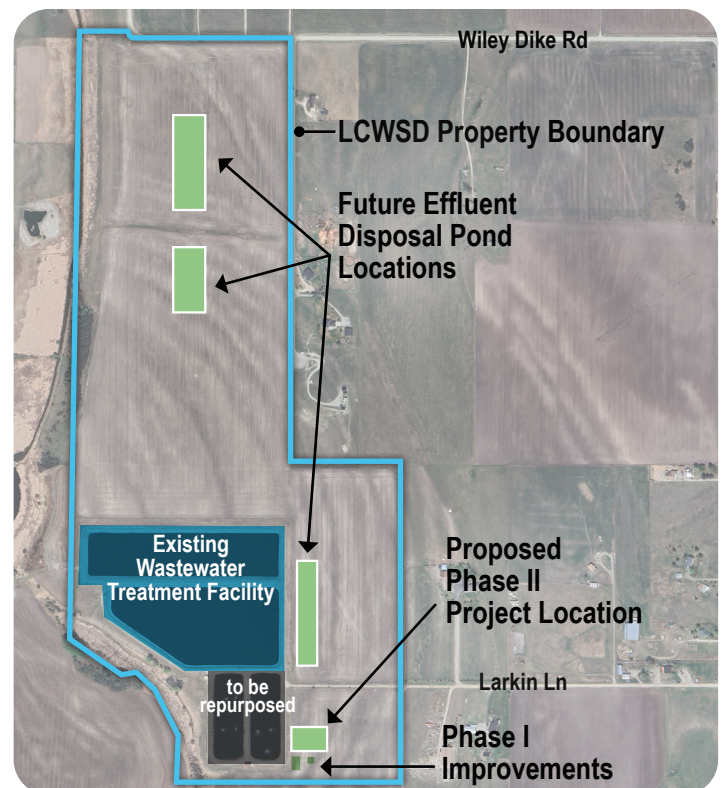
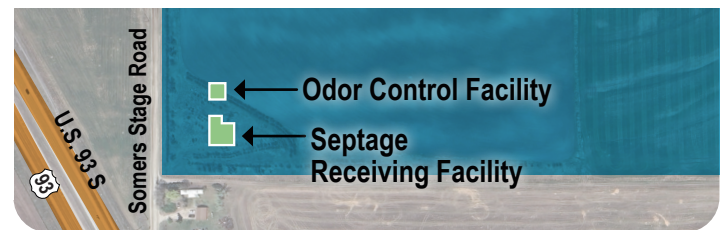
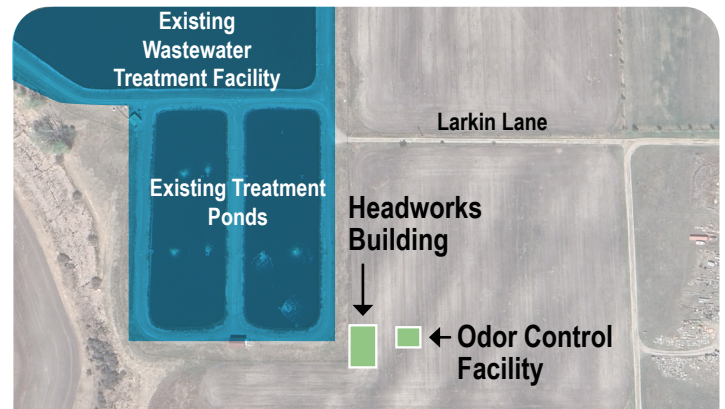
### PHASE I UPDATE

#### Construction of Phase I is currently underway!

The Phase I project includes:

- 💧 A new Headworks Building (Screening and Grit Removal) at the Existing WWTF Site
- 💧 Lift Station #10 Upgrades
- 💧 Construction of the Septage Receiving Facility
- 💧 Odor Control Facilities at the Headworks (Sized for Phase I and Phase II of the WWTF Improvements) and the Septage Receiving Facility

Phase I of the WWTF Improvements will primarily utilize grant funding.

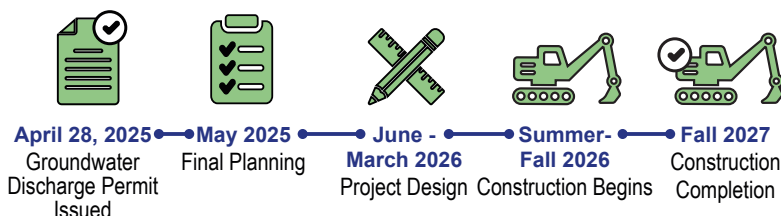


### PHASE II UPDATE

Final Phase II planning is currently in progress with the ground water discharge permit issued, planning will soon be finalized. A new Headworks Building (Screening and Grit Removal) at the Existing WWTF Site.

The Phase II Project Includes:

- 💧 Secondary Treatment
- 💧 Solids Handling
- 💧 Effluent Disposal



## COLLECTION SYSTEM UPGRADES

The collection system infrastructure was largely installed in 1987 and is in need of updating. Improvements to the Collection System will increase the capacity of the main wastewater trunk line along Highway 93 and several of the pump stations along this corridor will be upgraded.

Design of the Collection System Improvements is currently underway with surveyors on site for this project along Highway 93. Construction of improvements is expected to begin in 2026.

### Project Objectives

- 💧 Increase collection system capacity
- 💧 Update pumping infrastructure
- 💧 Project Funding
- 💧 All improvements will be 100% paid for by the developer

All improvements will be 100% paid for by the developer.



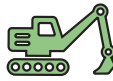
**April 28, 2025**

Begin Project Survey



**May 2025**

Design Collection  
System Upgrades



**November 2025**

Construction of  
Collection System  
Upgrades

## PROJECT PARTNERS

LCWSD is leading development of the WWTF project. Under an Interlocal Agreement signed on March 19, 2024, Flathead County will pay LCWSD to design, construct, operate, and maintain the new SRTF, which is an addition to the project the District was previously planning. Robert Peccia & Associates (RPA) is the engineering firm contracted to provide design services to LCWSD.



## CONTACTS



**RODNEY OLSON**

General Manager  
(406) 844-3881  
rodneyolson@lcwspd.net



**BRAD KOENIG, PE**

Project Manager  
(406) 447-5044  
bkoenig@rpa-eng.com

